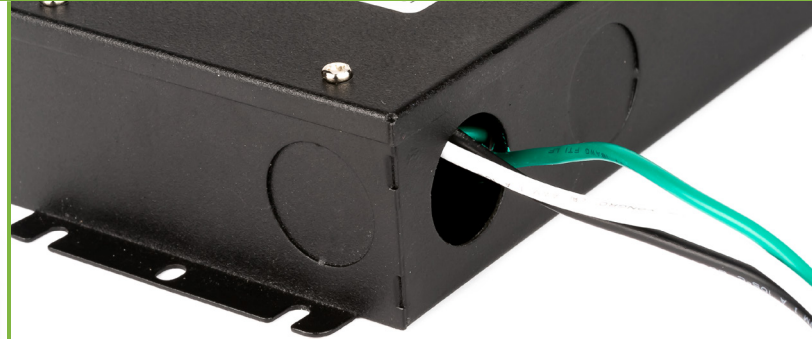


Universal Phase Dimming LED Driver



Phase Dimming LED Driver

The Universal Phase Dimming LED Drivers from Environmental Lights is the perfect bridge between traditional wall dimmers and modern LED technology. They are compatible with a wide array of popular dimmers, including CFL/LED, ELV and MLV types. This makes the drivers easy to integrate into existing lighting installations. See the accessories tab for specific recommendations.

- Accepts 100-277 VAC input at 50-60Hz
- UL listed Class 2 power supply
- Compatible with select MLV, ELV and CFL/LED dimmers
- Metal Housing with wiring compartments
- Waterproof rating: IP66
- Protections: Short circuit / Overload / Over voltage / Over current
- Warranty: 5 years



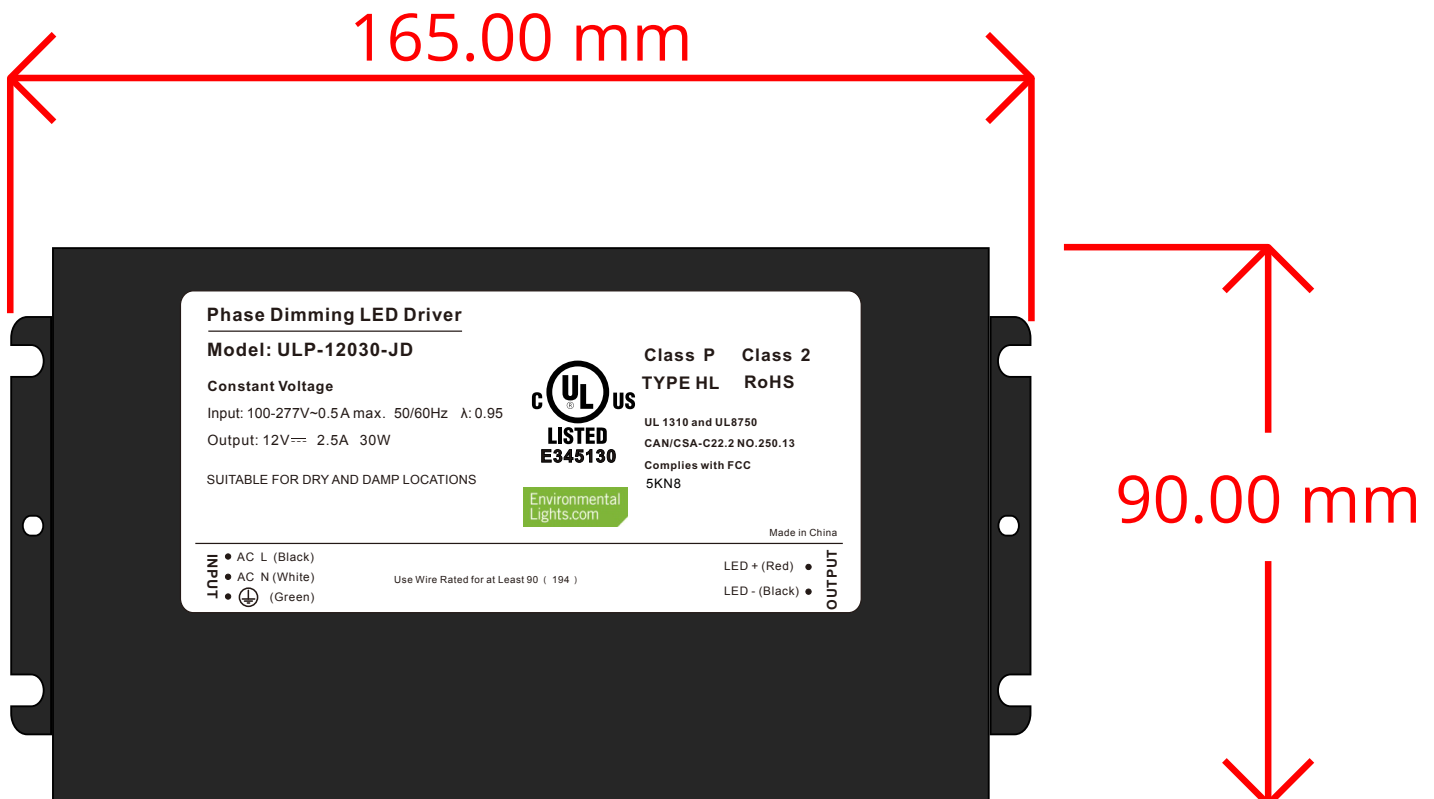
Universal Phase Dimming LED Driver

Specifications

ULP 30W 12 VDC Phase Dimming LED Driver

ULP-12030-JD

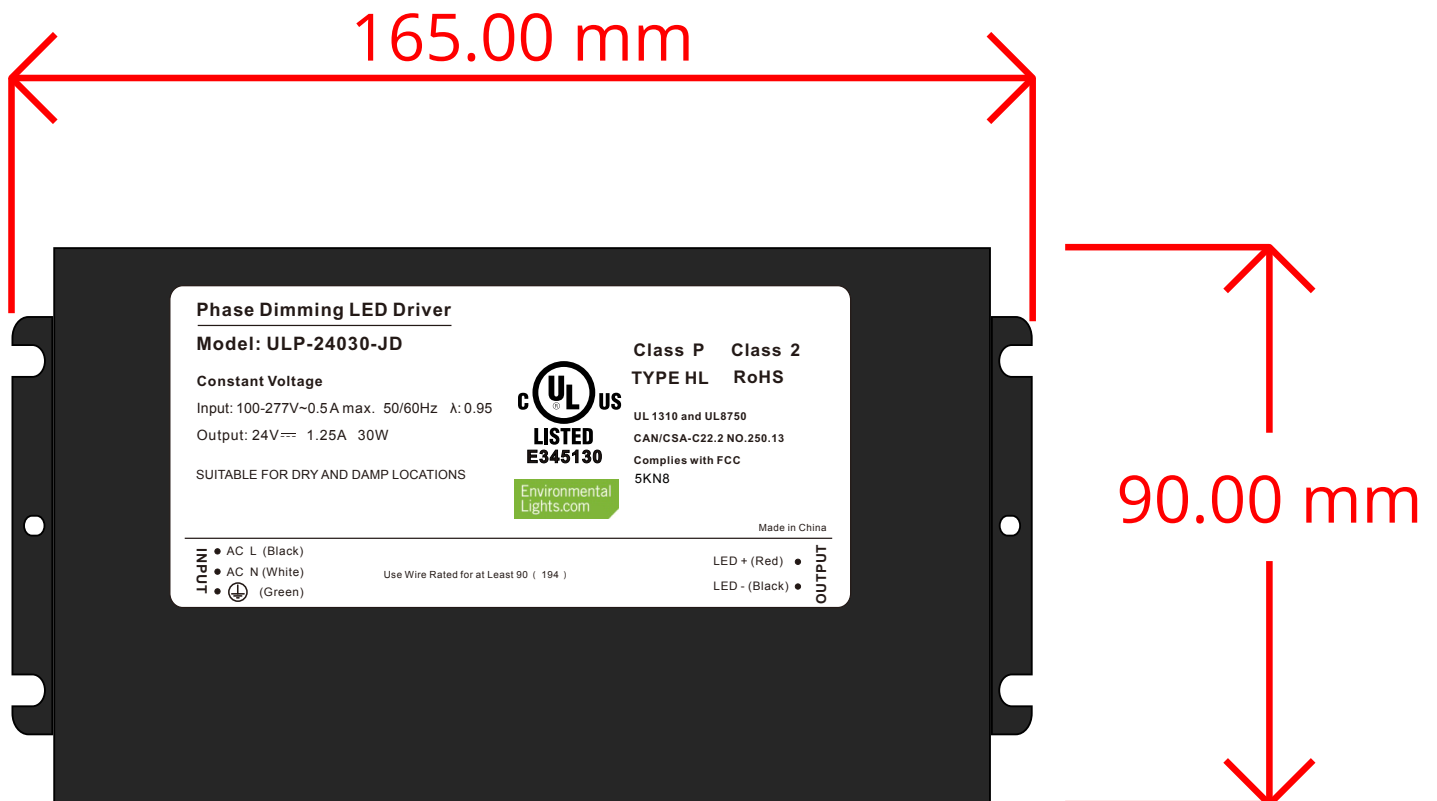
Power (W)	30
Length (mm)	165
Width (mm)	90
Height (mm)	26
Input Voltage (V)	100 to 277
Output Voltage (V)	12
Input Current (mA)	500
Output Current (mA)	2,500
IP Rating	IP66
PWM Frequency	410
Rating	UL, Class 2, Class P, Type HL, FCC, CSA
Warranty	5 years



Universal Phase Dimming LED Driver

Specifications

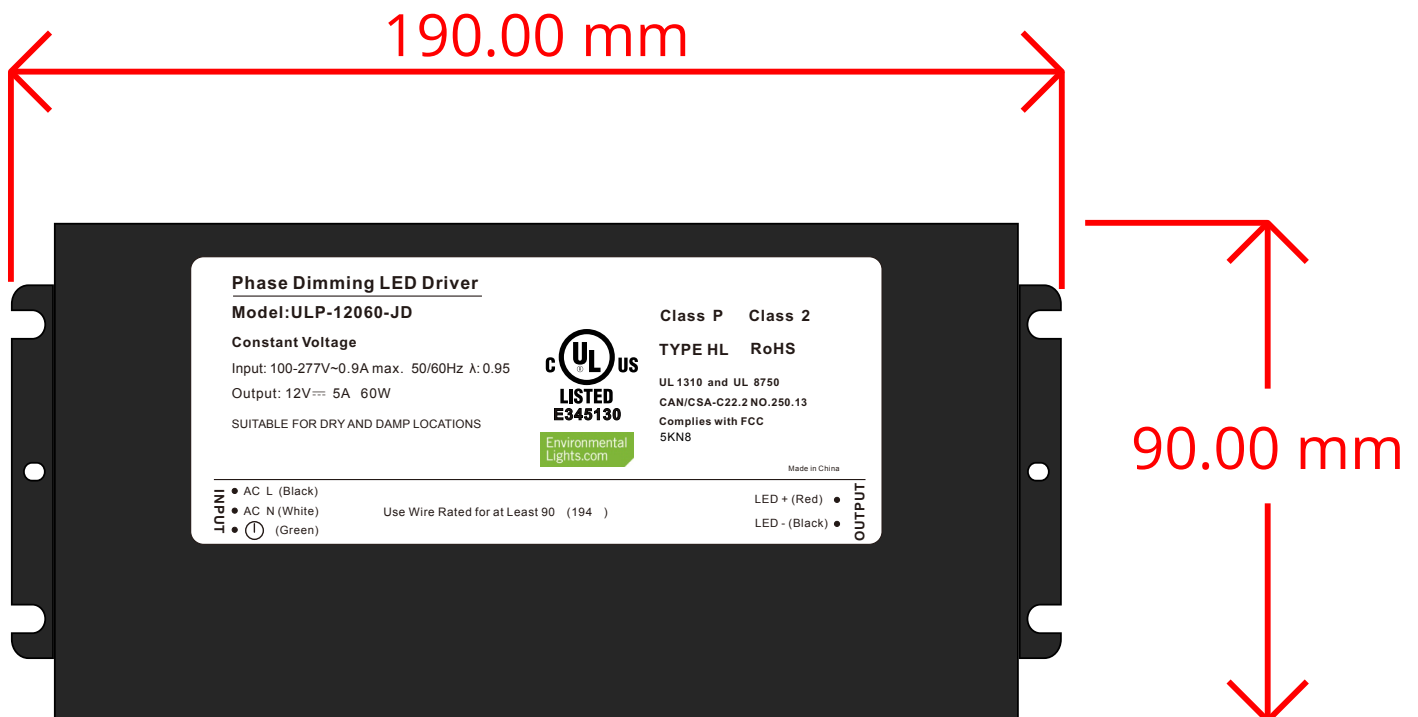
ULP 30W 24 VDC Phase Dimming LED Driver	
ULP-24030-JD	
Power (W)	30
Length (mm)	165
Width (mm)	90
Height (mm)	26
Input Voltage (V)	100 to 277
Output Voltage (V)	24
Input Current (mA)	500
Output Current (mA)	1,250
IP Rating	IP66
PWM Frequency	410
Rating	UL, Class 2, Class P, Type HL, FCC, CSA
Warranty	5 years



Universal Phase Dimming LED Driver

Specifications

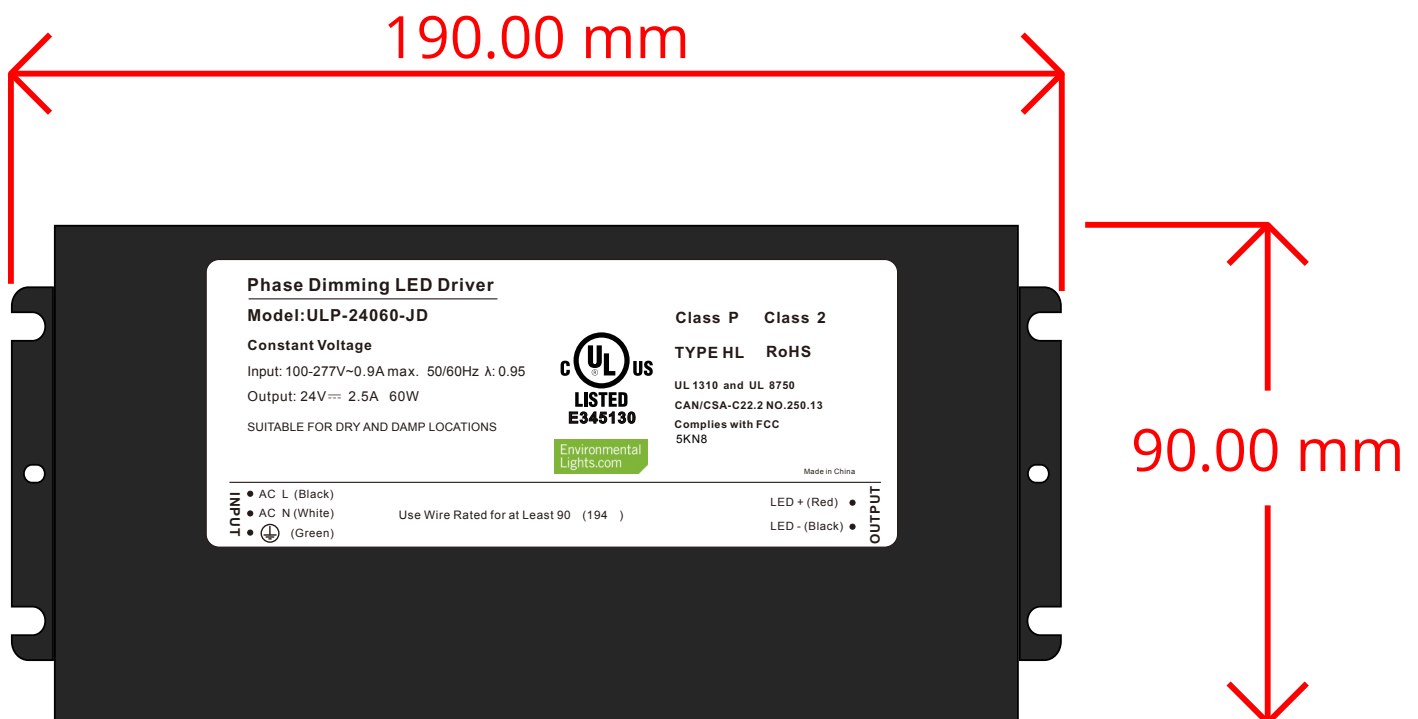
ULP 60W 12 VDC Phase Dimming LED Driver	
ULP-12060-JD	
Power (W)	60
Length (mm)	190
Width (mm)	90
Height (mm)	26
Input Voltage (V)	100 to 277
Output Voltage (V)	12
Input Current (mA)	900
Output Current (mA)	5,000
IP Rating	IP66
PWM Frequency	410
Rating	UL, Class 2, Class P, Type HL, FCC, CSA
Warranty	5 years



Universal Phase Dimming LED Driver

Specifications

ULP 60W 24 VDC Phase Dimming LED Driver	
ULP-24060-JD	
Power (W)	60
Length (mm)	190
Width (mm)	90
Height (mm)	26
Input Voltage (V)	100 to 277
Output Voltage (V)	12
Input Current (mA)	900
Output Current (mA)	2,500
IP Rating	IP66
PWM Frequency	410
Rating	UL, Class 2, Class P, Type HL, FCC, CSA
Warranty	5 years



Universal Phase Dimming LED Driver

Specifications

ULP 96W 24 VDC Phase Dimming LED Driver

ULP-24096-JD

Power (W)	96
Length (mm)	190
Width (mm)	94
Height (mm)	40
Input Voltage (V)	100 to 277
Output Voltage (V)	12
Input Current (mA)	1,300
Output Current (mA)	4,000
IP Rating	IP66
PWM Frequency	410
Rating	UL, Class 2, Class P, Type HL, FCC, CSA
Warranty	5 years

