

REVI XL 7-Inch Cylindrical Downlight

Tunable White

SYSTEM DESCRIPTION

The Environmental Lights Remote Voltage Illumination (REVI) downlight system is a low-voltage, Class 2 constant current solution designed for reliability, control, and easy installation. REVI XL downlights are ideal for commercial installations where enhanced light coverage, improved fixture longevity, and reduced electrical use are key to the project's success. The REVI system features high-lumen fixtures with deep, smooth dimming and a multi-channel remote DMX power supply that can be located up to 400 feet from the fixture.

Ideal Application: House of Worship, Auditoriums, Gymnasiums and pendants up to 8,000 lumens.

A LIGHT ENGINES



REVI XL2 Light Engine [160 W, 36V, 2700K-6500K]

REVI-XL2-36V-TW2765K-58D
REVI-XL2-36V-TW2765K-75D

Low-voltage, constant current light engine with up to 160 Watt power draw. Combine with mounting kit for a finished product.

Each Tunable White fixture will require the use of 2 REVI XL Power Supply Channels.

FIXTURE OPTIONS

- **Color Temperatures**
 - Tunable White, [2700K - 6500K]
- **Beam Angles**
 - Medium [58°], Wide [75°]
- **Mounting Kits & Accessories**
 - Cable, Stem and Surface mounting kits and accessories available & sold separately. Contact your Sales Engineer about your specific project.



REVI XL Downlighting Installation

SYSTEM FEATURES

- Low Voltage, Constant Current LED Downlight with multiple reflector and mounting options.
- Remote REVI XL Power Supplies & driverless fixtures
- Class 2 - fast & easy installations
- Dimmable to 0.1% with REVI Power Supplies
- Power from up to 400 feet away
- L80 Lifetime: 50,000 hours
- Warranty: 5-Year Limited

REGULATORY

- UL Listed
- Class 2
- RoHS

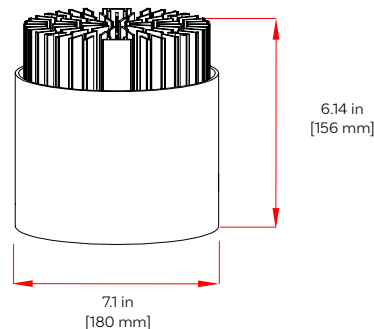
TECHNICAL SPECIFICATIONS

Correlated Color Temperature Tunable White, 2700K to 6500K	Maximum Power Draw 80 W
Forward Voltage 36 V typical	Maximum Drive Current 2100 mA
DMX Channels 2 Channels	Color Rendering Index 90+

DRIVE CURRENTS

Drive Currents	Total Lumens	Wattage	Forward Voltage (vF)	Power Supply
2100	8000	74.8	35.6	REVI-DriveXL-4-384W
1800	7000	63.3	35.2	
1500	5950	52.0	34.6	
600	2550	20.0	33.4	REVI-Drive-12-250W
500	2100	16.6	33.2	
300	1300	9.9	33.0	

SYSTEM DIMENSIONS



ASSEMBLY BUILDER

Example: REVI-XL2-36V-30K-58D= 36 Volt/160 Watt Light Engine, 3000K CCT, 58 Degree Beam Angle

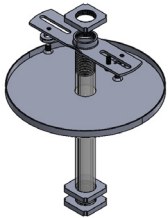
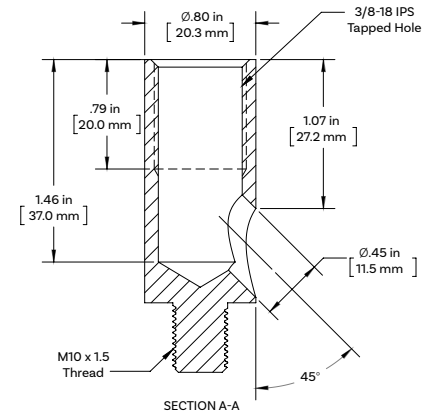
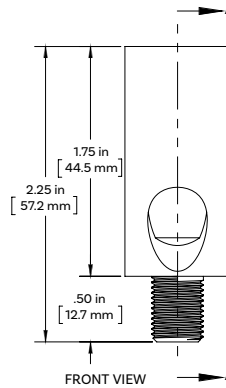
REVI-XL2	-	36V	-	TW2765	-	
Fixture Series		Light Engine		Color Temperature		Beam Angle
				TW2765 = Tunable White [2700K - 6500K]		58D = 58 Degree
						75D = 75 Degree

MOUNTING KITS & ACCESSORIES



REVI XL Thread Adapter - M10 to 3/8 IPS REVI-XL-adapter-M10-38ips

This M10 to 3/8 IPS adapter is included with each REVI-XL1 Light Engine. It facilitates simple connection to certain REVI XL Stem and Cable Mounts.

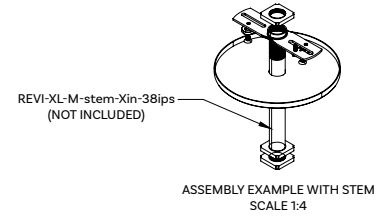
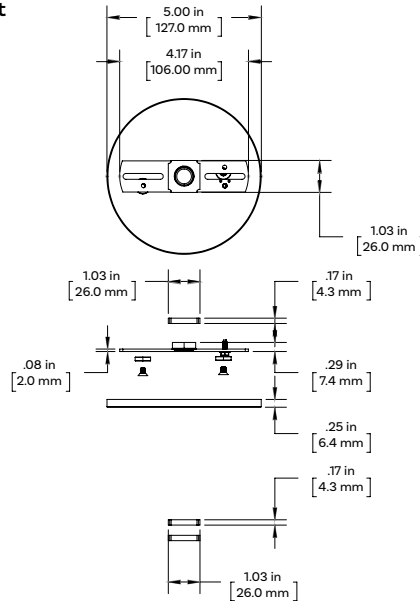


REVI XL Canopy for Stem or Surface Mount Fixed - Black Finish

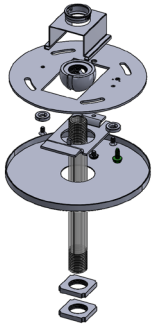
REVI-XL-M-canopy-fixed-38ips-B

An architectural-grade fixed canopy designed to assist in mounting REVI XL downlight fixtures.

For a polished look that expedites installation, magnets are utilized to secure the canopy.



MOUNTING KITS & ACCESSORIES

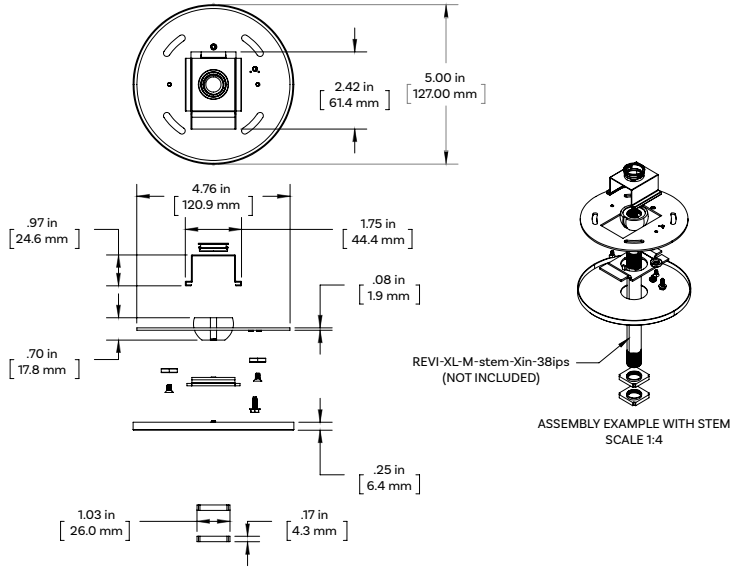


**REVI XL Canopy for Stem or Surface Mount
Swivel - Black Finish**

REVI-XL-M-canopy-swivel-38ips-B

An architectural-grade swivel canopy designed to assist in mounting REVI XL downlight fixtures. The swivel feature enables it to be used for sloped ceilings up to 38 degrees.

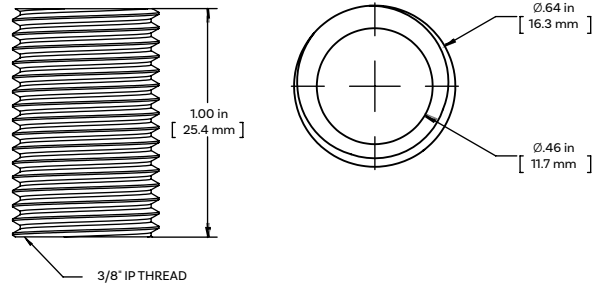
For a polished look that expedites installation, magnets are utilized to secure the canopy.



**REVI XL Stem - Surface Mount
3/8 IPS - Black Finish**

REVI-XL-M-stem-S-38ips-B

A miniature 1-inch stem for use with REVI XL downlight fixtures. Must be utilized with one of the REVI XL Canopy Kits.



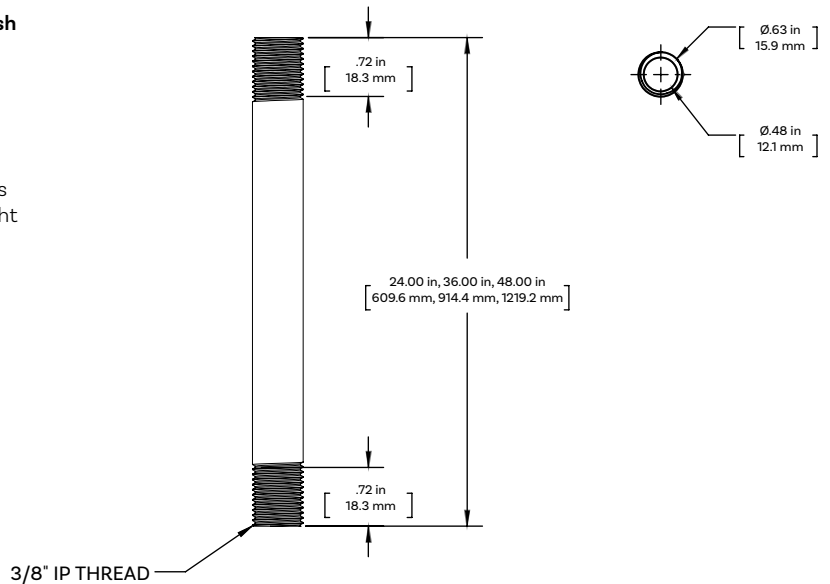
REVI XL Stem - 3/8 IPS - Black Finish

REVI-XL-M-stem-24in-38ips-B

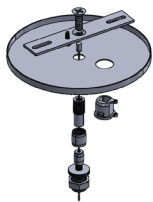
REVI-XL-M-stem-36in-38ips-B

REVI-XL-M-stem-48in-38ips-B

An architectural grade available in 24-inch, 36-inch and 48-inch stems used for mounting REVI XL downlight fixtures.



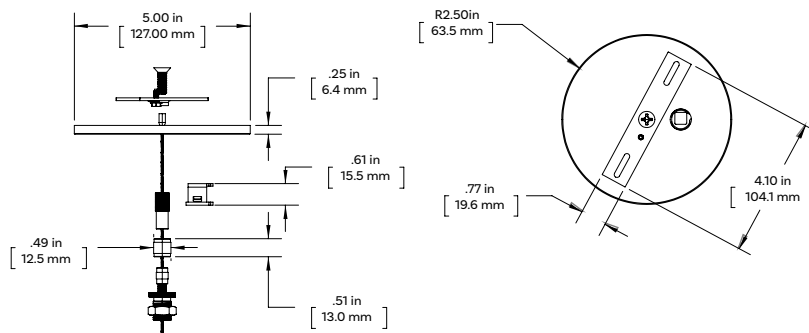
MOUNTING KITS & ACCESSORIES



REVI XL Cable Mount Canopy Kit
10-foot Cable - 3/8 IPS Gripper - Black Finish

REVI-XL-M-canopy-cable-10ft-38ips-B

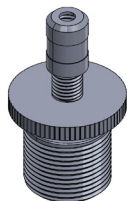
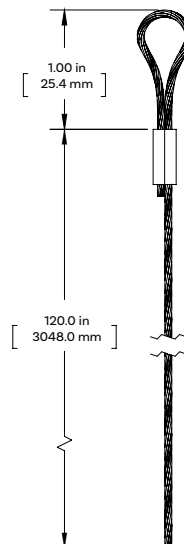
An architectural-grade cable mounting kit for mounting REVI XL downlight fixtures. A 10-foot cable and 3/8 IPS gripper are included in this package. The kit facilitates simple height adjustments at the fixture using the included hardware.



REVI XL Cable Mount - 10-foot Cable with Loop

REVI-XL-M-cable-10ft

A 1/16" aircraft cable with a 1" loop used for mounting REVI XL downlight fixtures. Can be used as the primary mounting accessory or secondary safety cable.



REVI XL Cable Mount - 3/8 IPS Gripper

REVI-XL-M-grip-38ips

A 3/8 IPS gripper accessory for cable mounting REVI XL downlight fixtures. The gripper assists in adjusting the height of fixtures.

