

REVI

LIGHTING DESIGN & CONSULTANCY SERVICES

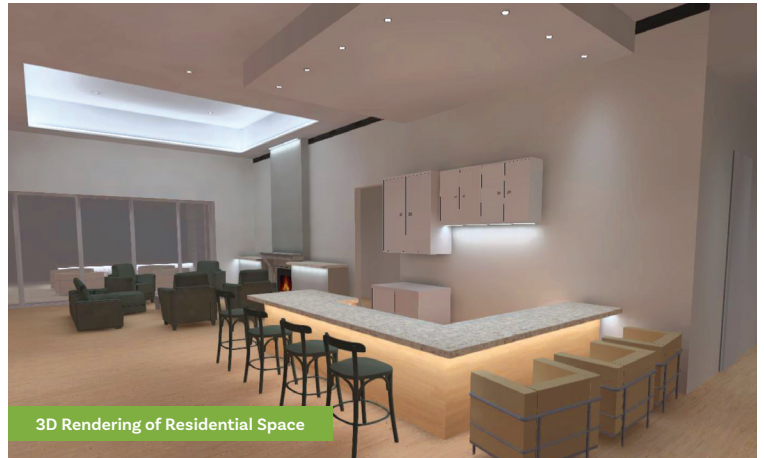
Lighting is one of the biggest growth opportunities for residential and commercial integrators. At Environmental Lights, we provide support for lighting design, product specification, and installation best practices. We can help you bridge the knowledge gap from selling lighting control to selling lighting systems.

This is why we've created a turn-key process for our integration partners to advance their own lighting expertise.

A SERVICE OFFERINGS

We provide you with a lighting design proposal that includes:

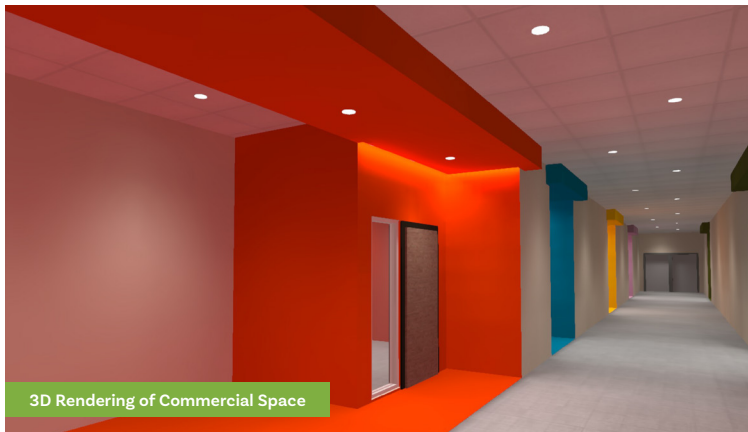
- **Advanced 3D Renderings** - Mock-Ups of Your Project with Lighting
- **False Color Renderings** - Depicts Light Distribution
- **Fixture Maps** - Matches Fixtures with Power Supplies
- **Detailed Foot Candle Calculations**
- **Specification Sheets & IES Files**
- **Design Review Meeting**



Interior Rendering



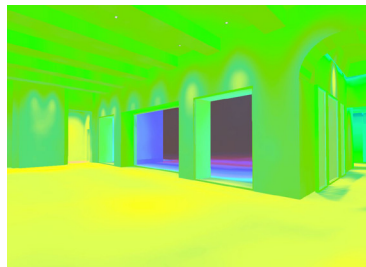
Exterior Rendering



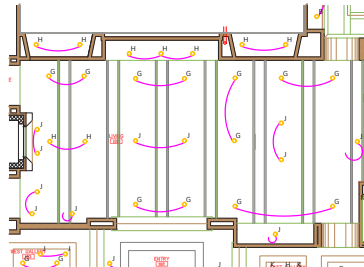
Advanced 3D Rendering



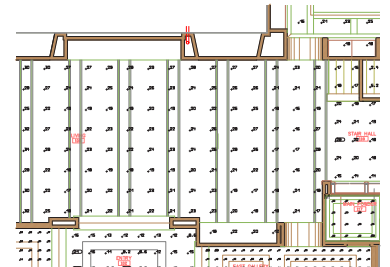
False Color Rendering



Fixture Map



Detailed Foot Candle Calculations



“Lighting design is the most important selling tool I have. I win 90% of my lighting projects because of my lighting design package.”

Josh Little, Owner at Evolve Technologies (Dallas)

B COST STRUCTURE

We work with you to win projects!

Lighting design is an investment we are undertaking together. Our cost structure reflects this philosophy. We offer a nominal fee at the time of your project submission and a fixed total fee if you win the project!

NO. OF FIXTURES	DEPOSIT	SUCCESS FEE	TOTAL FEE
100	\$100.00	\$300.00	\$400.00
200	\$200.00	\$600.00	\$800.00
300	\$300.00	\$900.00	\$1,200.00



3D Rendering of Commercial Space

“*This lighting design fee structure makes it very easy for us to convert a lead into a high probability opportunity.*”

Carmine Malatesta, CEO at Moonshoot Automation (Toronto)

C CHECKLIST FOR INTEGRATORS

- Plans in DWG or Equivalent Format** - Line Drawings Acceptable
- Room Details** - Space Dimensions & Ceiling Heights
- Fixture Preferences** - Round, Square, Trimless, etc.
- Linear Lighting Preferences** - RGBW, Tunable White, etc.
- Timeline**
- Budget**

D GETTING STARTED

As lighting experts, we've created a process for our integration partners to advance their own lighting expertise. Let us help you build lighting as a cornerstone for your future business.

Contact us today!

Call: 888.880.1880

Email: ContactUs@EnvironmentalLights.com

For More Information

888.880.1880

ContactUs@EnvironmentalLights.com

© 2021, Environmental Lights. All rights reserved.