

REVI XLC Downlight, 6-inch Round Recessed Fixed

REVI-XLC-6RRF-XXK, REVI-XLC-LENS-6-RXX-XXXX

PRODUCT DESCRIPTION

Low voltage LED lighting fixtures using REVI remote driver platforms are ideally suited to improve LED illumination and reliability. Remote driver platforms are useful in difficult-to-access ceilings or architectural features. The REVI XLC downlight fixtures allow lighting designers and integrators to select from specific lumen levels, correlated color temperature, and beam distribution to configure a comprehensive lighting solution.

Ideal Application: Sloped ceilings and wall wash applications in House of Worship, Auditoriums, Gymnasiums and pendants up to 8300 lumens.

SYSTEM FEATURES

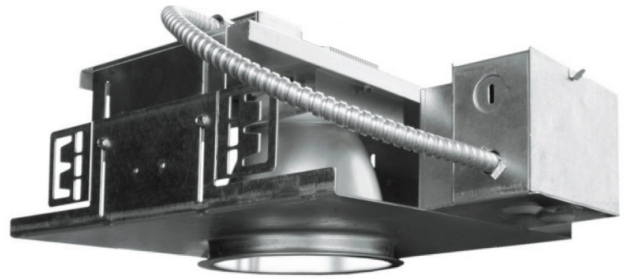
- Heavy-gauge galvanized steel housing provides a secure mounting platform for the electrical components and protects the optical assembly.
- Vertically adjustable baggle to suit different ceiling thicknesses.

TECHNICAL DATA

- All power leads include WAGO™ connectors for fast power connection
- Thermally protected
- See table for wattages and delivered lumens at various drive currents
- L70 = 50,000 hours at 45°C
- CRI 90+ is standard for fixtures.

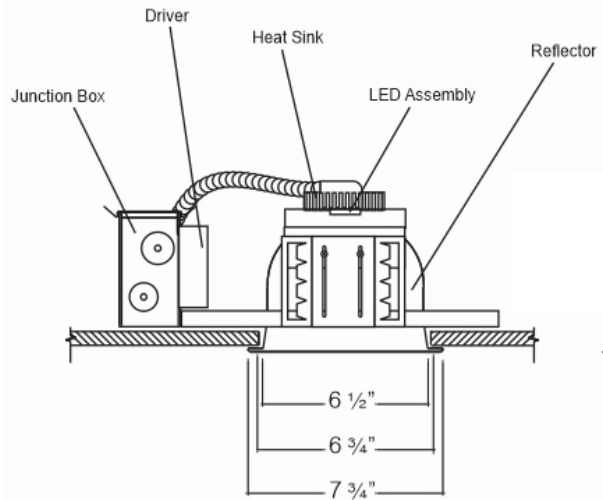
REMOTE DRIVER OPTIONS

The REVI system features a remote panel that operates multiple lighting fixtures. These remote power supplies can be installed in an easy-to-access area such as a utility closet. Benefits include longer driver life due to reduced exposure to the heat of the LED engine and emergency (EM) options. Low-voltage class-2 wiring between driver panel and lighting fixture. No conduit required.

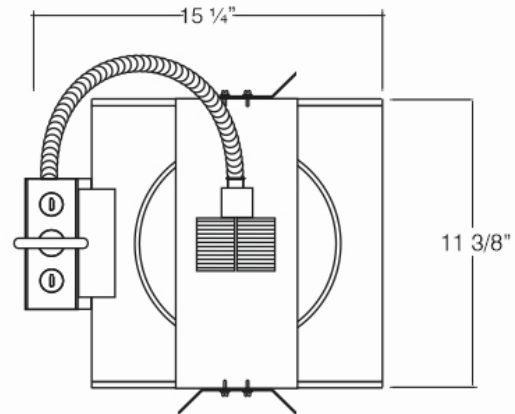


MECHANICAL SPECIFICATIONS

FRONT VIEW



AERIAL VIEW



5 Year
Warranty



For More Information

888.880.1880

ContactUs@EnvironmentalLights.com

© Environmental Lights. All rights reserved.

ASSEMBLY BUILDER

FIXTURE SKU BUILDER

Example: REVI-XLC-6RRF-35K = REVI XLC Downlight 6-inch Round Recessed Fixed, 3500K Color Temperature

REVI-XLC-6RRF

Fixture Series

Color Temperature

35K = 3500K

30K = 3000K

DELIVERED LUMENS DATA

Type	Model	Current (mA)	Nominal Power (W)	Lumens	Beam Angle
Fixed	REVI-XLC-6RRF-35K	2100	80	8300	70°

Scaling factors for other color temperatures: 3000K = 0.97

Scaling factor for 90 CRI=0.83

*Can be driven with REVI-Drive-12-250W - Only 9 fixtures total (3 fixtures per bank of 4 channel outputs)

Typical Layout for Low Voltage LED Lighting Fixtures with Remote Driver Platform

