

REVI XLC Downlight, 7-inch Round Pendant

REVI-XLC-7RP-RGBXXK-XXD, REVI-XLC-7RP-XXK-XXD

PRODUCT DESCRIPTION

The REVI-XLC 7-inch Round Pendant is a UL Listed and architectural-grade pendant downlighting fixture for use with the REVI (Remote-Voltage Illumination) system. This light engine is available in monochrome 3500K, 4000K, RGB + 3500K, and RGB + 4000K. Either a 58-degree or 75-degree beam angle reflector comes included with this product. This REVI-XLC downlight can be configured with a variety of compatible reflectors and mounted with cable, stem, or surface mounts. Each element is sold separately.

Ideal Application: House of Worship, Auditoriums, Gymnasiums and pendants between 3400 - 7,800 lumens.



REVI XL Downlighting Installation

KEY FEATURES

- Remote REVI XL Power Supplies & driverless fixtures
- 3500K, 4000K, RGB + 3500K & RGB + 4000K CCT available
- Includes 58 or 75 degree reflector
- Fast & easy installations
- Dimmable to 0.1% with REVI Power Supplies
- UL Listed, Class 2, RoHS

TECHNICAL SPECIFICATIONS

MONOCHROME

Light Engine	REVI-XLC-7RP-35K-58D	REVI-XLC-7RP-40K-58D	REVI-XLC-7RP-35K-75D	REVI-XLC-7RP-40K-75D
CCT	3500K	4000K	3500K	4000K
Brightness	7800 lumens	7800 lumens	7800 lumens	7800 lumens
Drive Current	2100 mA	2100 mA	2100 mA	2100 mA
Forward Voltage	36 Vdc	36 Vdc	36 Vdc	36 Vdc
Power Draw	80 Watts	80 Watts	80 Watts	80 Watts
Color Rendering Index	90+	90+	90+	90+
Linkable Fixtures per Class-2 Channel	1	1	1	1

RGBW

Light Engine	REVI-XLC-7RP-RGB35K-58D	REVI-XLC-7RP-RGB40K-58D	REVI-XLC-7RP-RGB35K-75D	REVI-XLC-7RP-RGB40K-75D
CCT	Red, Green, Blue, 3500K	Red, Green, Blue, 4000K	Red, Green, Blue, 3500K	Red, Green, Blue, 4000K
Brightness	3400 lumens	3400 lumens	3400 lumens	3400 lumens
Drive Current	1400/1400/1400/2100 mA	1400/1400/1400/2100 mA	1400/1400/1400/2100 mA	1400/1400/1400/2100 mA
Forward Voltage	20 Vdc	20 Vdc	20 Vdc	20 Vdc
Power Draw	135 Watts	135 Watts	135 Watts	135 Watts
Color Rendering Index	90+	90+	90+	90+
Linkable Fixtures per Class-2 Channel	2	2	2	2



5 Year
Warranty



For More Information

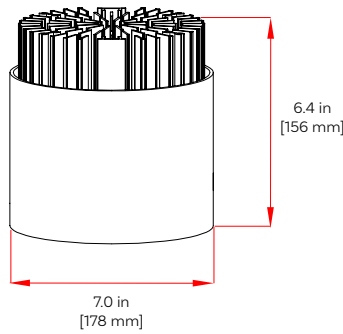
888.880.1880

ContactUs@EnvironmentalLights.com

©Environmental Lights. All rights reserved.

REVI XLC Downlight, 7-inch Round Pendant
REVI-XLC-7RP-RGBXXK-XXD, REVI-XLC-7RP-XXK-XXD

MECHANICAL SPECIFICATIONS



MONOCHROME FIXTURE OPERATING DRIVE CURRENTS

Drive Currents	Total Lumens	Wattage	Forward Voltage	Power Supply
2100	7800	74.8	35.6	REVI-DriveXL-4-384W
1800	6690	63.3	35.2	
1500	5570	52.0	34.6	
500	1860	16.6	33.2	REVI-Drive-12-250W
300	1110	9.9	33.0	

ASSEMBLY BUILDER

FIXTURE SKU BUILDER

Example: REVI-XLC-7RP-RGB35K-58D = REVI XLC Downlight 7-inch Round Pendant, RGB + 3500K Color Temperature, 58 Degree Beam Angle

REVI-XLC-7RP

Fixture Series

Color Temperature

Beam Angle

35K = 3500K

58D = 58-degrees

40K = 4000K

75D = 75-degrees

RGB35K = Red, Green, Blue + 3500K

RGB40K = Red, Green, Blue + 4000K

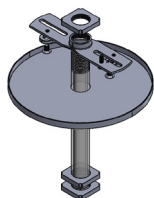
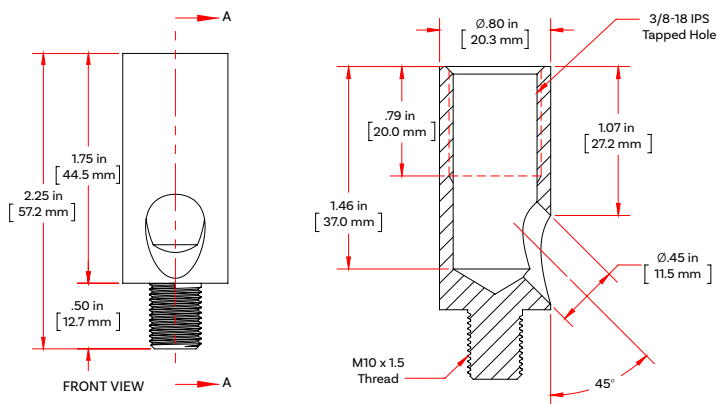
MOUNTING KITS & ACCESSORIES



REVI XL Thread Adapter, M10 to 3/8 IPS

REVI-XL-adapter-M10-38ips

This M10 to 3/8 IPS adapter is included with each REVI-XLC-7RP Light Engine. The XL Thread Adapter facilitates simple connection to certain REVI XL Stem and Cable Mounts. This product is not sold separately.

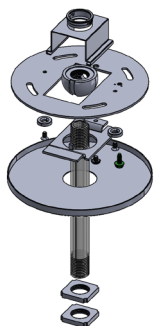
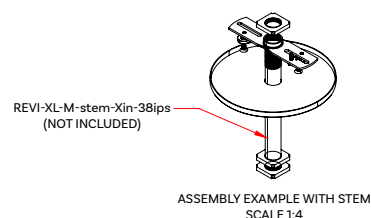
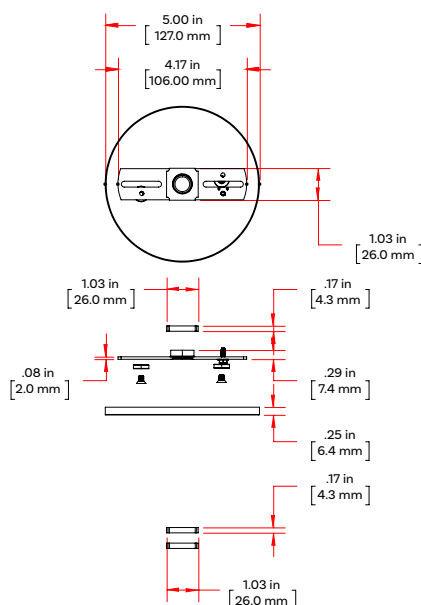


REVI XL Canopy for Stem or Surface Mount Fixed, Black Finish

REVI-XL-M-canopy-fixed-38ips-B

An architectural-grade fixed canopy designed to assist in mounting REVI XL downlight fixtures.

For a polished look that expedites installation, magnets are utilized to secure the canopy.

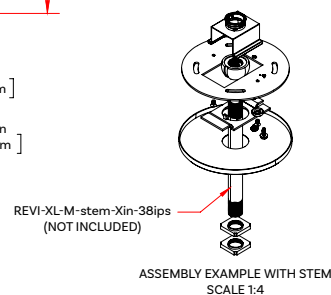
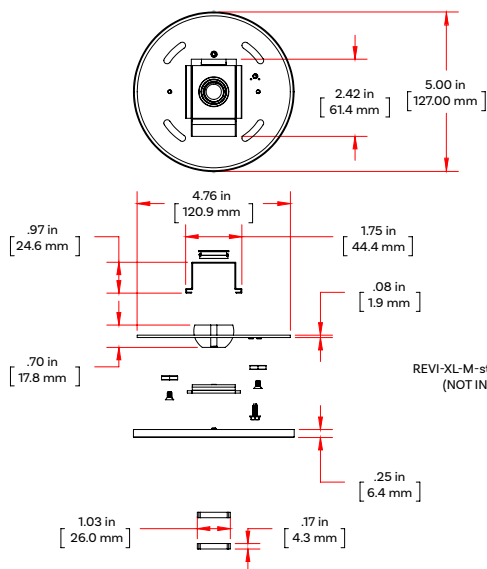


REVI XL Canopy for Stem or Surface Mount Swivel, Black Finish

REVI-XL-M-canopy-swivel-38ips-B

An architectural-grade swivel canopy designed to assist in mounting REVI XL downlight fixtures. The swivel feature enables it to be used for sloped ceilings up to 38 degrees.

For a polished look that expedites installation, magnets are utilized to secure the canopy.

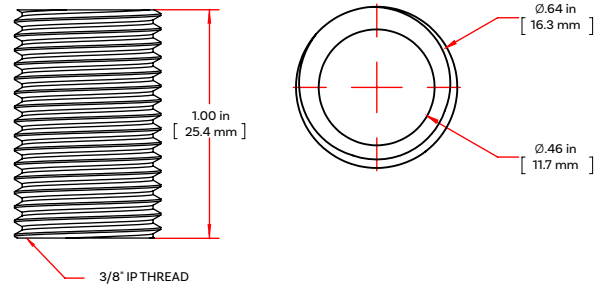


MOUNTING KITS & ACCESSORIES



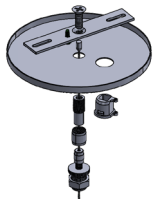
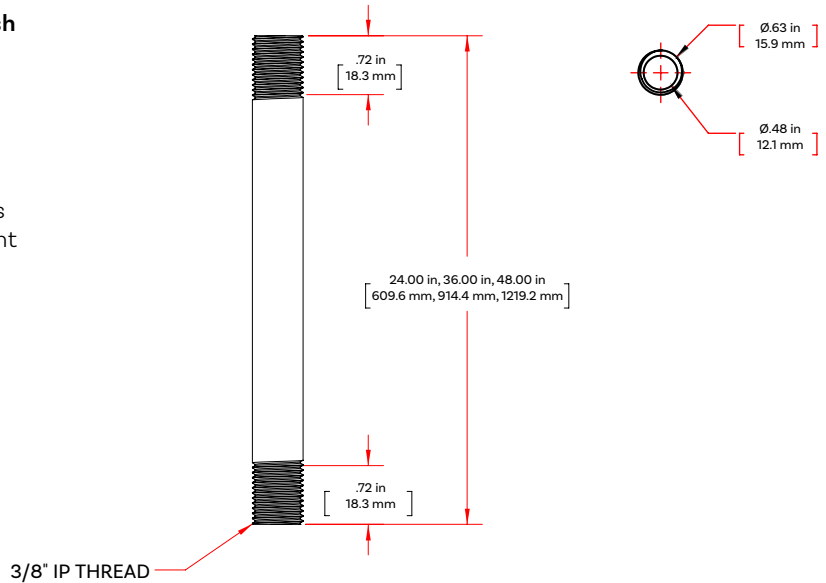
REVI XL Stem - Surface Mount
3/8 IPS - Black Finish
REVI-XL-M-stem-S-38ips-B

A miniature 1-inch stem for use with REVI XL downlight fixtures. Must be utilized with one of the REVI XL Canopy Kits.



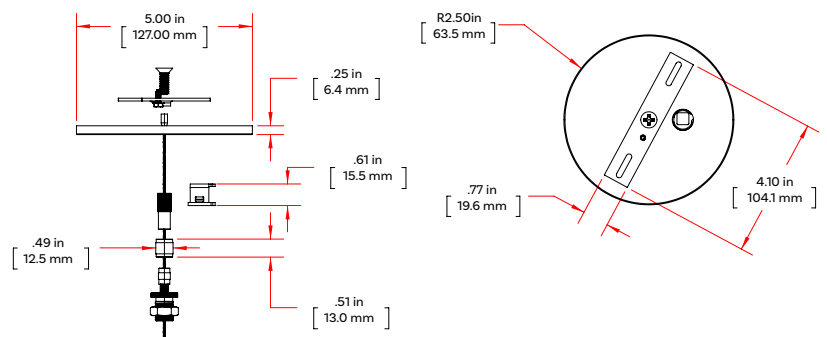
REVI XL Stem - 3/8 IPS - Black Finish
REVI-XL-M-stem-24in-38ips-B
REVI-XL-M-stem-36in-38ips-B
REVI-XL-M-stem-48in-38ips-B

An architectural grade available in 24-inch, 36-inch and 48-inch stems used for mounting REVI XL downlight fixtures.



REVI XL Cable Mount Canopy Kit
10-foot Cable - 3/8 IPS Gripper, Black Finish
REVI-XL-M-canopy-cable-10ft-38ips-B

An architectural-grade cable mounting kit for mounting REVI XL downlight fixtures. A 10-foot cable and 3/8 IPS gripper are included in this package. The kit facilitates simple height adjustments at the fixture using the included hardware.



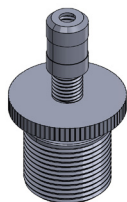
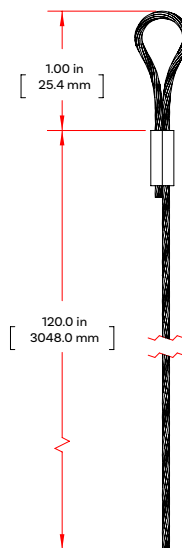
MOUNTING KITS & ACCESSORIES



REVI XL Cable Mount - 10-foot Cable w/ Loop

REVI-XL-M-cable-10ft

A 1/16" aircraft cable with a 1" loop used for mounting REVI XL downlight fixtures. Can be used as the primary mounting accessory or secondary safety cable.



REVI XL Cable Mount - 3/8 IPS Gripper

REVI-XL-M-grip-38ips

A 3/8 IPS gripper accessory for cable mounting REVI XL downlight fixtures. The gripper assists in adjusting the height of fixtures.

