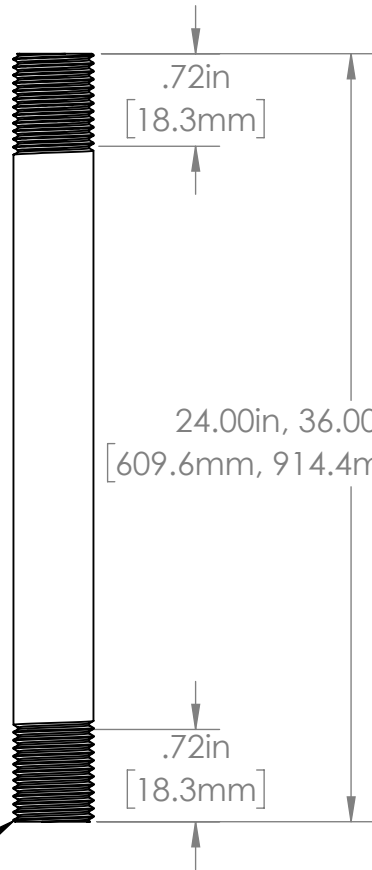
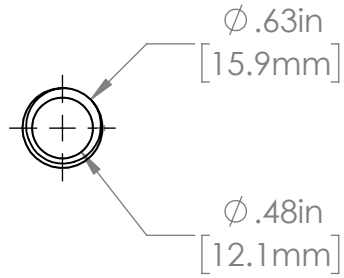


NOTE: OUTER DIAMETER IS 0.625"-0.635" (5/8")



3/8" IP THREAD



SCALE 1 : 1

REVI SPECIFICATIONS		TOLERANCES	PROPRIETARY AND CONFIDENTIAL	NAME	DATE
AVAILABLE STOCK LENGTHS	24in, 36in, 48in	STRIP LENGTH: +1.5MM, -1.5MM PER 1/2M OR +0.3%, -0.3%	THE INFORMATION CONTAINED IN THIS DRAWING IS THE SOLE PROPERTY OF ENVIRONMENTAL LIGHTS. ANY REPRODUCTION IN PART OR AS A WHOLE WITHOUT THE WRITTEN PERMISSION OF ENVIRONMENTAL LIGHTS IS PROHIBITED.	<b>DRAWN BY</b>	L. WONG
		CHANNEL LENGTH: +6.5MM, -3.0MM		<b>COMMENTS:</b>	
		CHANNEL HEIGHT & WIDTH: +1.0MM, -1.0MM			
		LEAD LENGTHS: +102MM, -6.5MM			
		JUMPER LENGTHS: +13MM, -0.0MM			
		POWER CONSUMPTION: +5%, -20%			
		CRI: +5%, -0%			
		LED CCT: ADHERENT TO ANSI STANDARDS			



EL PART NO. REVI-XL-M-stem-Xin-38ips-B		REV <b>A1</b>
SCALE: 2:3	WEIGHT:	SHEET 1 OF 1