

Please read and understand this entire manual before attempting to assemble, operate or install the product.

WARNING:



Risk of fire or electric shock. Changes or modifications to this unit not expressly approved by the party responsible for compliance could void the user's authority to operate the equipment. Risk of fire or electric shock. Install this kit only in the luminaires that have the construction features and dimensions shown in the photographs and/or drawings. To prevent wiring damage or abrasion, do not expose wiring to edges of sheet metal or other sharp objects. Do not make or alter any open holes in an enclosure of wiring or electrical components during kit installation. The recessed luminaire is intended for mounting only in a covered ceiling where only the led side of the luminaire will be exposed to damp or wet locations. The thickness of the ceiling controlled within 2 to 17mm. Do not place your hand underneath spring clip during removal process. snapping of the clips can cause injuries to the hand.

Illustrations on the manual are for installation purpose only. It may not be identical to the fixture purchased.

Product Information

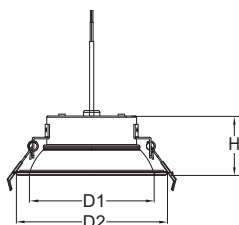
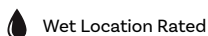


Fig. 1 Line Drawing

Model No.	Size	Input Current	CCT	Dimensions			Cut-out (inch)
				D1	D2	H	
REVI-SL4-18V-27K	4"	500mA	2700K	96mm/3.8"	117mm/4.61"	50mm/2"	103mm/4" to 106mm/4.2"
REVI-SL4-18V-30K			3000K				



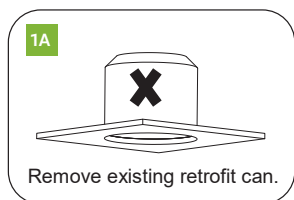
Wet Location Rated

Packing List

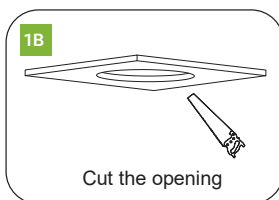
No.	Descriptions	Qty.
1	LED fixture	1 PC
2	Installation Manual	1 PC
3	Connector	2 PCS

Installation Steps

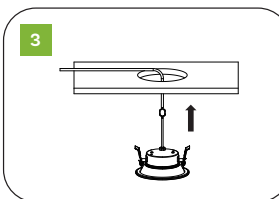
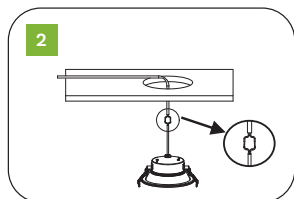
Note: Before beginning the installation, Make sure all power is off, Shutting power off in breaker box to areas where downlights are to be installed is recommended.



Remove existing retrofit can.



Cut the opening



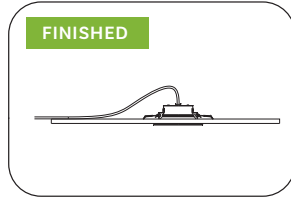
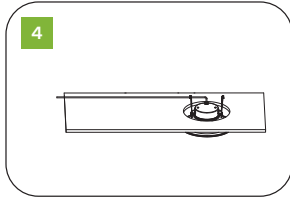
Step 1: Double check and measure the ceiling hole. Make sure it is the correct size for outside rim of the luminaire to cover the hole while still allowing the back of luminaire to sink in to the ceiling and springs to hold firmly.

A. Remove existing retrofit can if present or move it out of the way since it will not be needed for installation. (Fig. 1)

B. If new hole is to be cut, use provided hole template. Place template over the desired location. Cut the opening with a saw (not included). (Fig. 2)

Step 2: Electrical connection of the input wire of the optical engine to the power output through the terminal (red + black -) (Fig. 3)

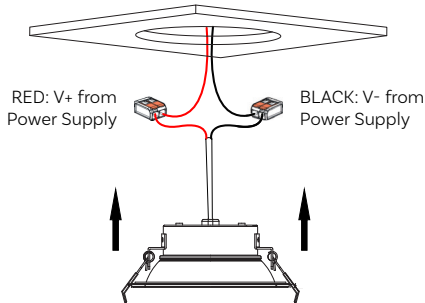
Step 3: Pull the spring clip on the fixture up and through the ceiling hole securely and place module in the hole making sure the spring clips are holding. (Fig. 4 & 5)



Step 4: Finished and Turn the power back on. If the module doesn't illuminate within 5seconds, turn power off, carefully remove the module and double check all wiring and replace. (Fig.6)

Wiring Details

WIRING / SINGLE FIXTURE



Up to (2) x 18V REVI SL 4-inch Downlights can be wired onto a single Class-2 power feed. Whenever wiring multiple REVI 3-inch downlight fixtures onto a single channel, they must be wired in series where the red V+ wire will serve as the input and black V- will pass current to the following fixture. Follow all local electrical codes, rules, regulations and guidelines.

Wire Polarity:

- Red Lead, -V+
- Black Lead, -V-

WIRING / TWO FIXTURES

