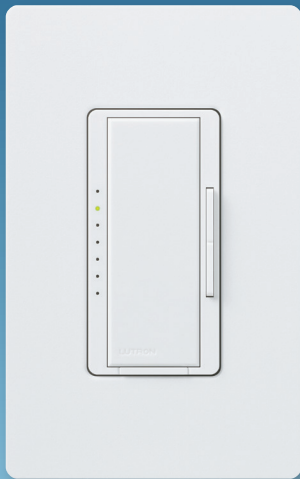


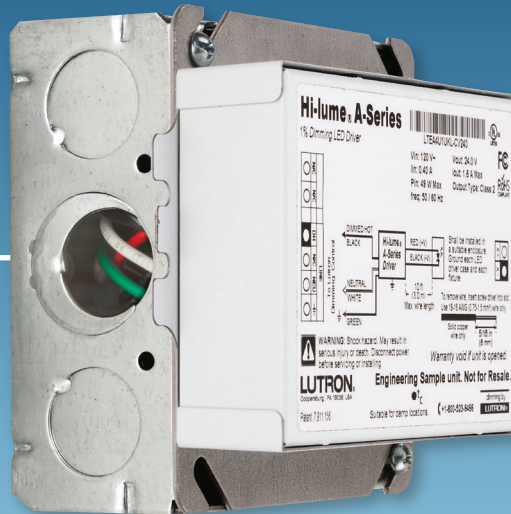
NEW

Hi-lume® A-Series LED Driver

1% dimming UL Listed remote mount LED driver



Maestro Wireless®
dimmer



UL Listed Hi-lume A-Series LED driver
(provided on a junction box)

Low voltage
(wire up to 60 ft)

LED light bar

or

LED strip light

- **Ideal solution for dimming under-cabinet and cove lighting**

- Control multiple LED light bars or LED strip lights up to 40 W
- Remote mount driver up to 60 ft away from LED source
- Provided on a junction box for easy installation and wire termination

- **Backed by Lutron performance, reliability, and support**

- Engineered to work with a full range of Lutron controls
- Highest quality dimming performance from 100% down to 1%
- Industry leader—over 50 years of reliable innovation and support

Meets requirements:

- UL Listed
- RoHS compliant
- FCC Part 15 compliant

For more information:

www.lutron.com/HiLumeLED
www.lutron.com/findafixture
www.lutron.com/ledbuildamodel

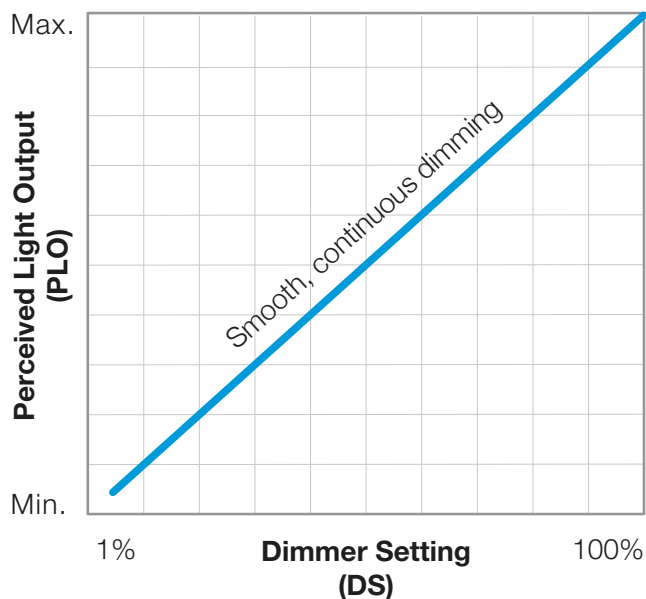


Purchase today:

at your local electrical distributor

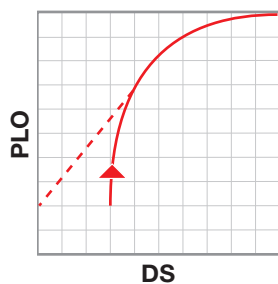
1% Dimming for LED Strip Lighting

Lutron offers unmatched LED dimming performance and reliability



- Smooth, continuous dimming—no pop-on, steps, flicker, or drop-out—which are commonly observed problems with other LED dimming drivers.
- Designed for 50,000 hours of operation at full-rated load backed by Lutron's 50 years of experience designing power electronics.

Commonly seen undesired behaviors when dimming an LED*



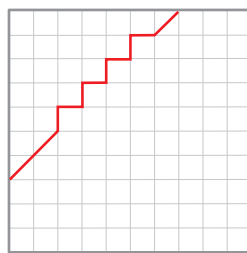
Pop-on

After being dimmed to low level and switched off, LED bulb does not turn on until slider is moved up



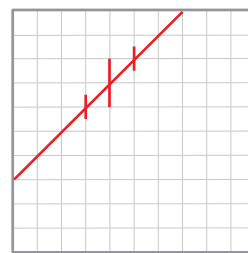
Dead travel

Adjusting the control without a corresponding change in light level



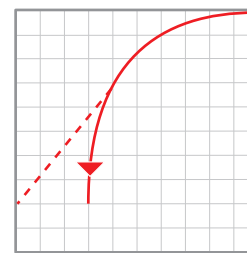
Visible steps

Visible steps in light level while adjusting the slider



Flicker

Small changes in light intensity



Drop-out

Lights turning off unexpectedly

* LED control white paper (367-2035)

Lutron support and service

The **Lutron LED Control Center of Excellence** is the industry resource for LED controls information. Resources include:

- Driver selection tool
- Compatible controls list
- High performance fixture list

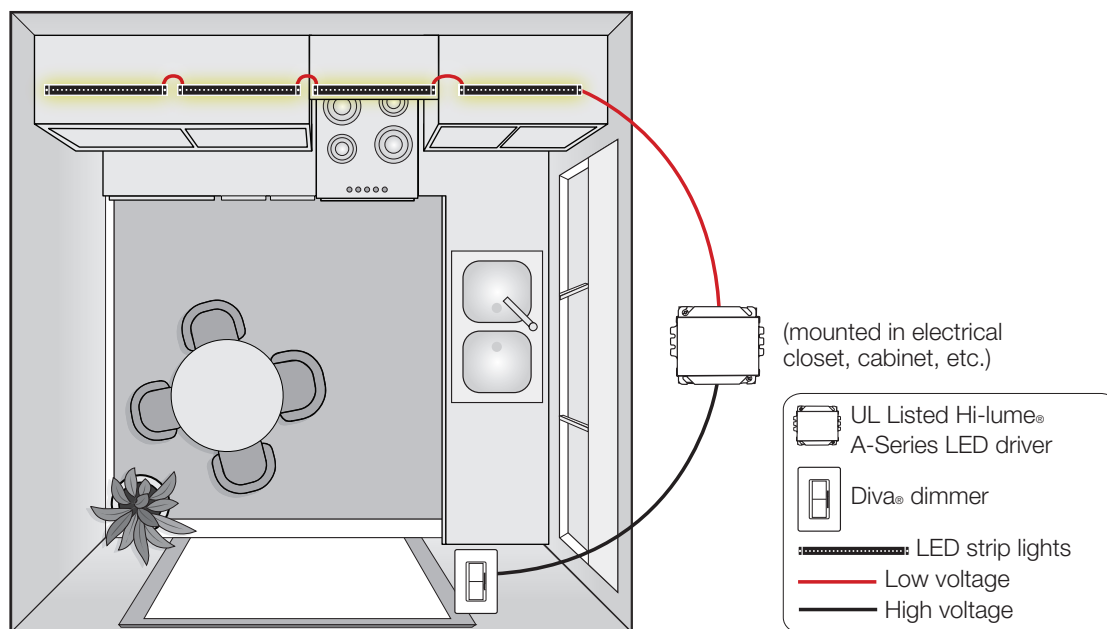
You can specify the UL Listed Hi-lume® A-Series LED Driver for use with fixtures under 40 W. Contact us at **1.877.DIM.LED8** or **LEDs@lutron.com** to request your fixture/driver combination.

Lutron products are backed by a **global service organization** and **24/7 live technical support** at **1.800.523.9466**.

Product information

Easy installation for any application

- Driver can be remote mounted up to 60ft away from LED source
- Provided with a junction box for easy wire termination



Engineered to work with a full range of Lutron controls

2-wire dimmers: Nova T[☆]®, Maestro Wireless®
(with neutral)

3-wire dimmers: Ariadni®, Diva®, Maestro®, Maestro Wireless®, Nova®, Nova T[☆]®, Skylark®, Vierti®

Systems: Energi Savr Node™ with EcoSystem®; Energi TriPak® PowPak® dimming module with EcoSystem®; GRAFIK Eye® QS with EcoSystem®; HomeWorks® QS dimmers; LCP128 panel; RadioRA® 2 dimmers and wireless wallbox power module; wallbox power modules; remote dimming modules and Ecosystem power module; Quantum® LP and GP panels

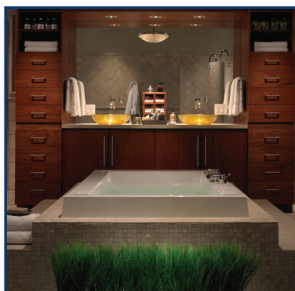
Key applications



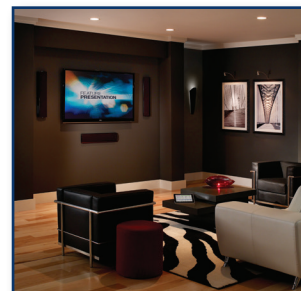
Lobby



Kitchen



Bathroom



Home Theater

Ordering information - UL Listed Hi-lume® A-Series LED Driver

Stocked Model Numbers – sold at your local electrical distributor or lighting showroom:

	12V	24V
Forward phase	LTEA4U1UKL-AV120	LTEA4U1UKL-CV240
EcoSystem® or 3-wire*	L3DA4U1UKL-AV120	L3DA4U1UKL-CV240

* Rated for use in commercial applications only.

For OEMs: Other models available; refer to the LED Driver Specification Submittal for more details.

www.lutron.com/hilumeled

World Headquarters 1.610.282.3800

Technical Support Center 1.800.523.9466 (Available 24/7)

Customer Service 1.888.588.7661



© 11/2013 Lutron Electronics Co., Inc. | P/N 367-2453 REV A

