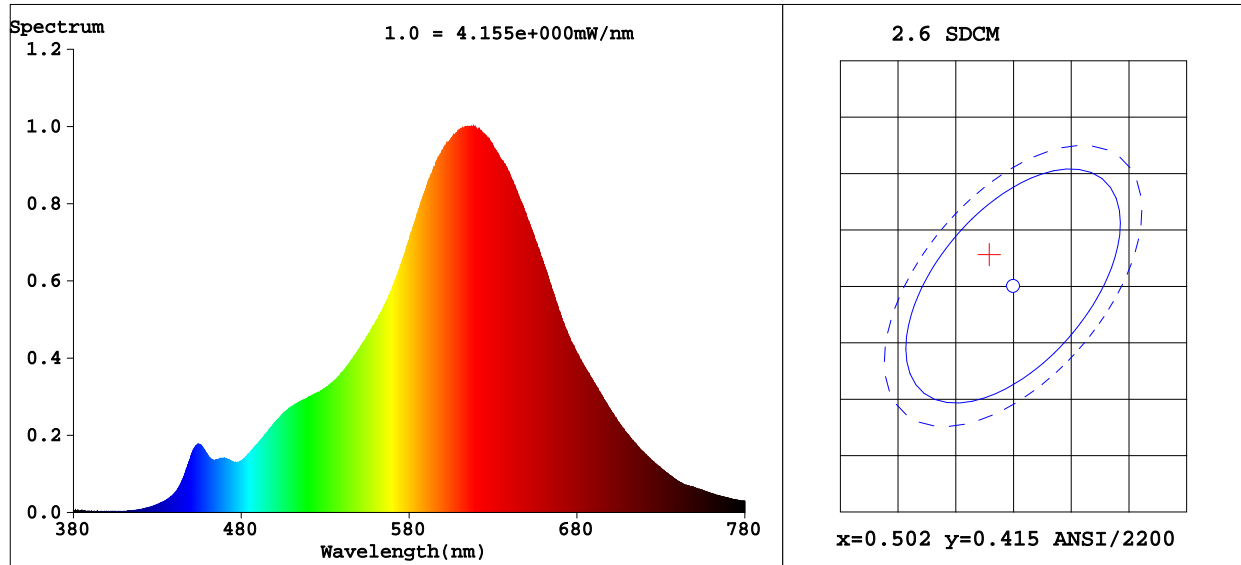


# Integrating Sphere Test Report

Eluxtra™ ProFlex LED Neon - Tunable White 2200K/5700K

LN-PF-TW2257K-10m



## Colorimetric Parameters

Chromaticity Coordinate: x=0.4997 y=0.4181/u'=0.2848 v'=0.5362

CCT=2278K (Duv=0.0009) Dominant WL:Ld =586.4nm Purity=75.5%

Peak WL:Lp=617.3nm FWHM=110.1nm

Render Index: Ra=85.5

R1 =85	R2 =96	R3 =92	R4 =84	R5 =87	R6 =98	R7 =82	
R8 =62	R9 =24	R10=92	R11=86	R12=90	R13=88	R14=96	R15=77

## Photometric & Radiometric Parameters

Flux=166.2 lm Eff.:31.31 lm/W Fe=570.8 mW Scotopic:175.61 S/P:1.0568

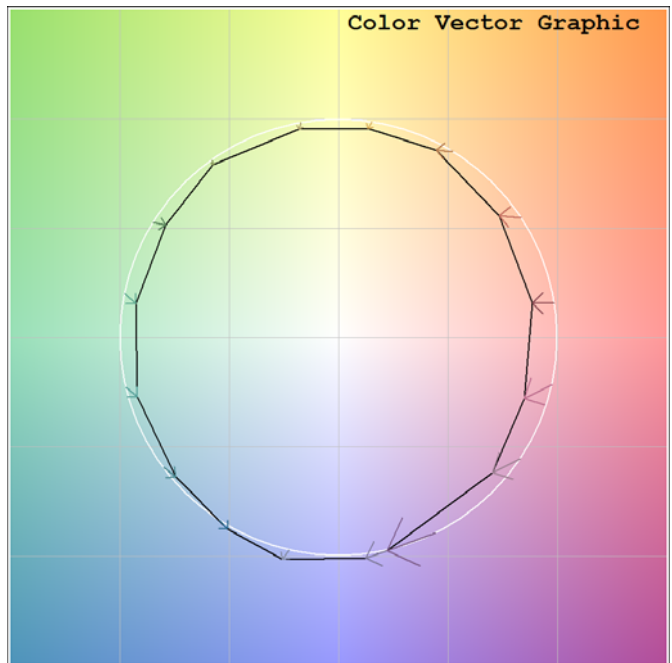
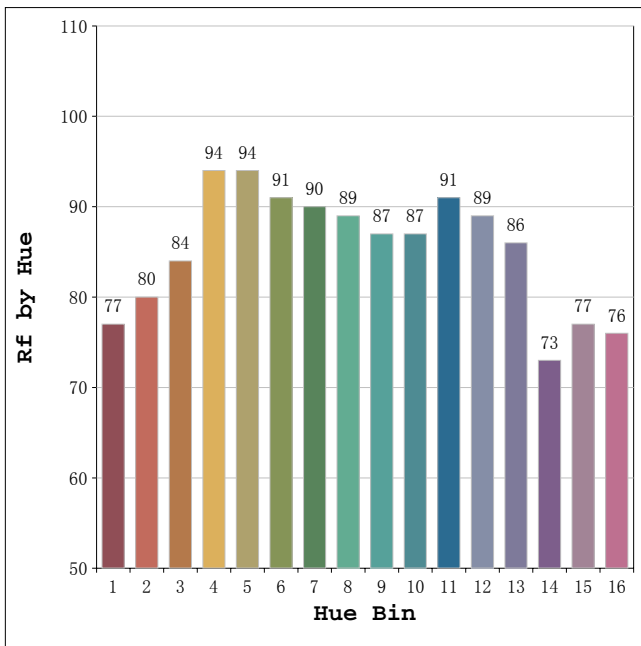
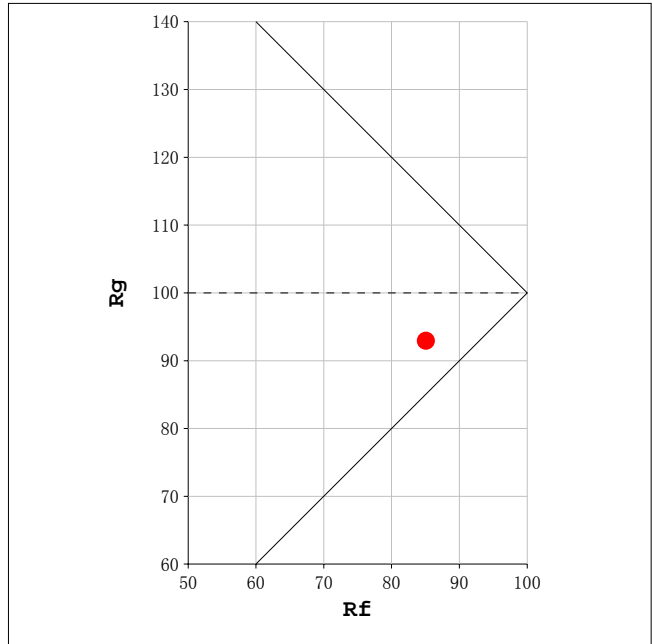
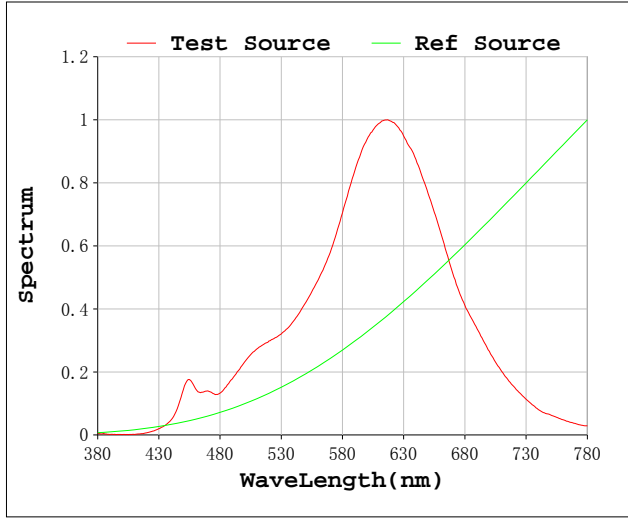
## Electrical parameters

V=24.00 V I=0.2212 A P=5.308 W PF=1.000 F=0.00 Hz

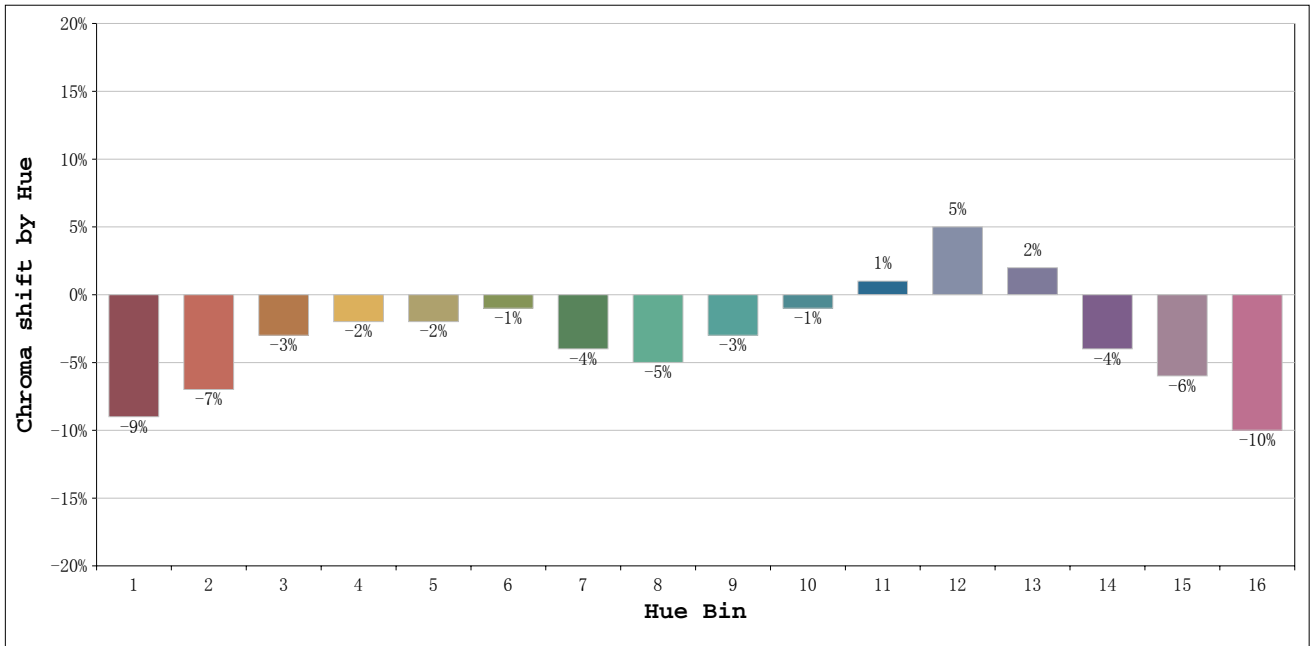
Status: Integral T = 961 ms Ip = 51870 (79%)

Test Mode: Fast Test; Sensitivity = High; Tecool: ON

Rf: 85      CCT: 2278 K      u': 0.2848  
 Rg: 93      Duv: 0.0009      v': 0.5362

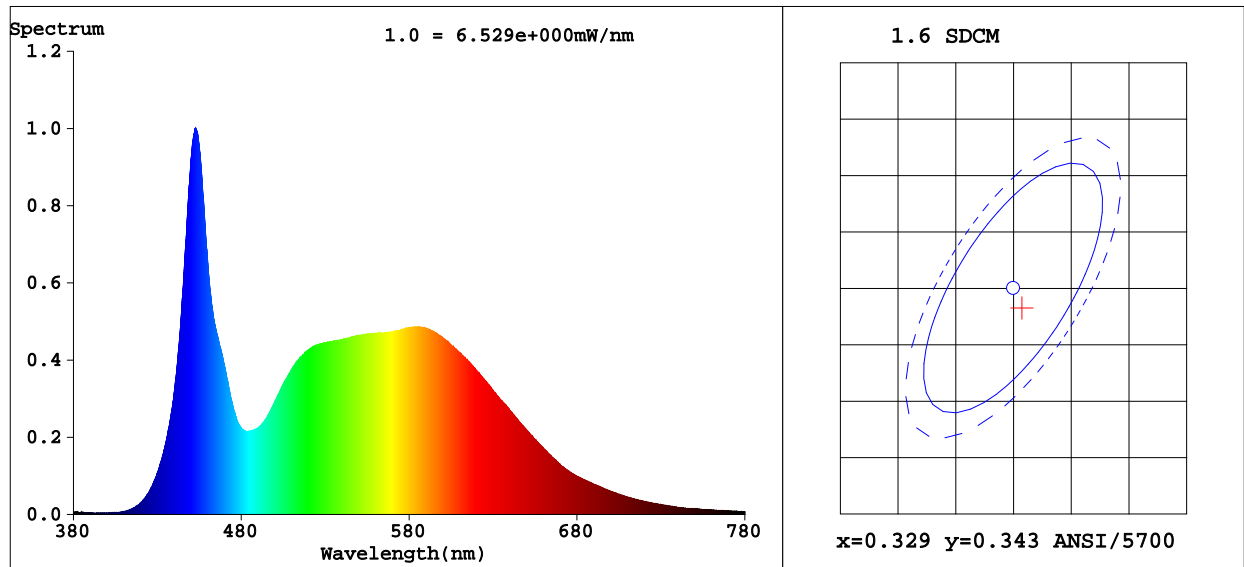


**Environmental Lights**  
**888-880-1880**



Hue Bin	Hue Angle	Rf	Graphic shift(%)	
			Chroma	Hue
1	0.0° - 22.5°	77	-9	2
2	22.5° - 45.0°	80	-7	6
3	45.0° - 67.5°	84	-3	7
4	67.5° - 90.0°	94	-2	1
5	90.0° - 112.5°	94	-2	2
6	112.5° - 135.0°	91	-1	1
7	135.0° - 157.5°	90	-4	-1
8	157.5° - 180.0°	89	-5	4
9	180.0° - 202.5°	87	-3	5
10	202.5° - 225.0°	87	-1	7
11	225.0° - 247.5°	91	1	5
12	247.5° - 270.0°	89	5	-1
13	270.0° - 292.5°	86	2	-11
14	292.5° - 315.0°	73	-4	-22
15	315.0° - 337.5°	77	-6	-11
16	337.5° - 360.0°	76	-10	-8

**Environmental Lights**  
888-880-1880



### Colorimetric Parameters

Chromaticity Coordinate:  $x=0.3295$   $y=0.3407/u'=0.2050$   $v'=0.4769$

CCT=5633K (Duv=0.0012) Dominant WL:Ld =519.7nm Purity=1.5%

Peak WL:Lp=452.7nm FWHM=20.0nm

Render Index:Ra=84.4

R1 =83	R2 =90	R3 =92	R4 =84	R5 =84	R6 =84	R7 =88	
R8 =70	R9 =15	R10=74	R11=83	R12=59	R13=85	R14=96	R15=79

### Photometric & Radiometric Parameters

Flux=203.7 lm Eff.:36.31 lm/W Fe=651.0 mW Scotopic:428.17 S/P:2.102

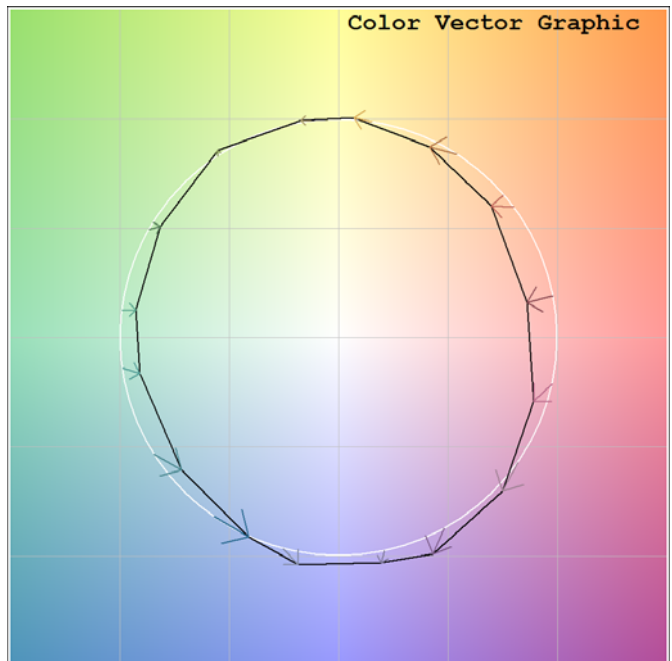
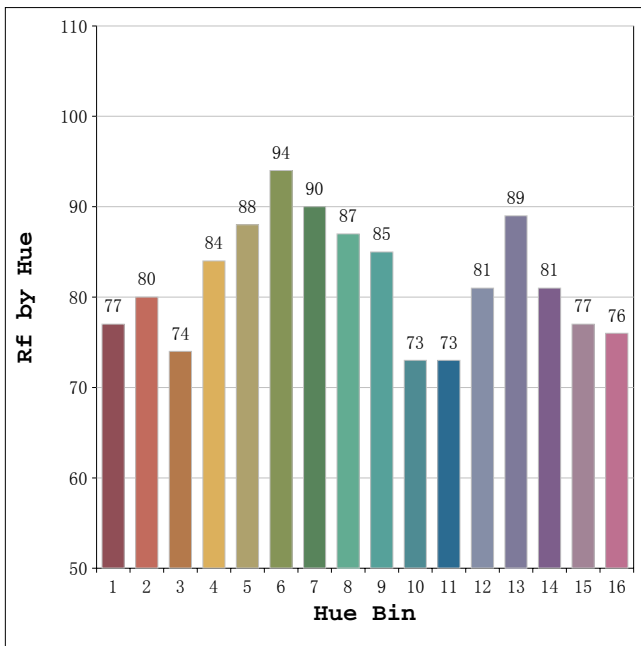
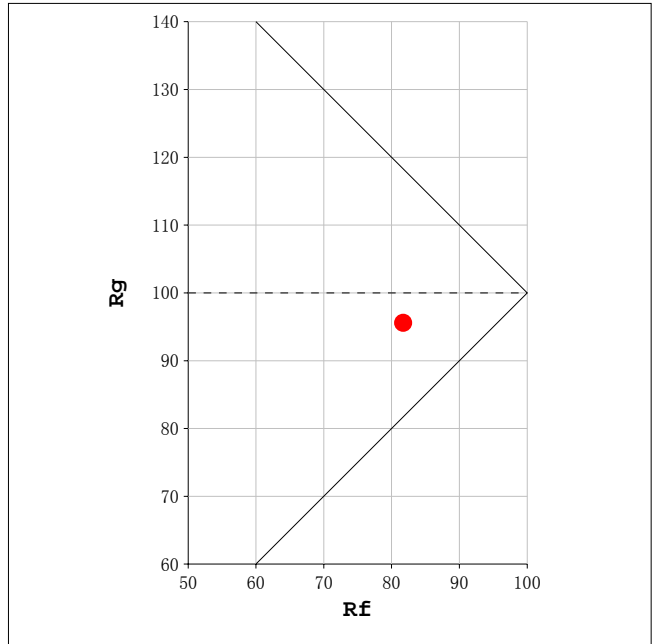
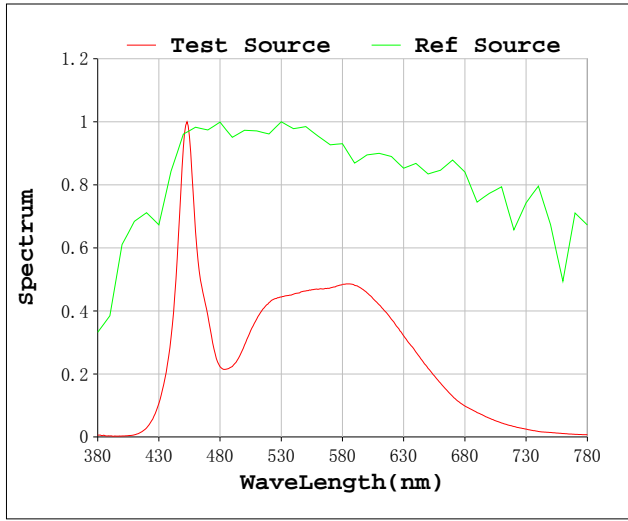
### Electrical parameters

V=24.00 V I=0.2338 A P=5.610 W PF=1.000 F=0.00 Hz

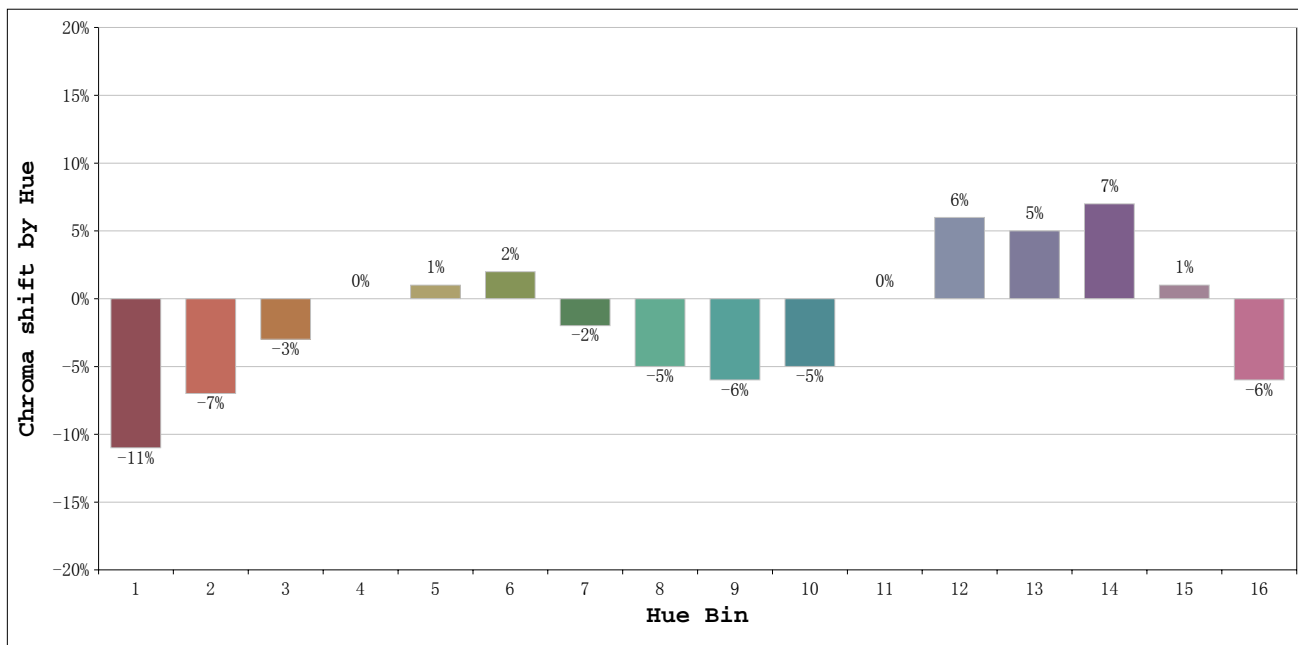
Status: Integral T = 961 ms Ip = 48417 (74%)

Test Mode: Fast Test; Sensitivity = High; Tecool: ON

Rf: 82      CCT: 5633 K      u': 0.2050  
 Rg: 96      Duv: 0.0012      v': 0.4769

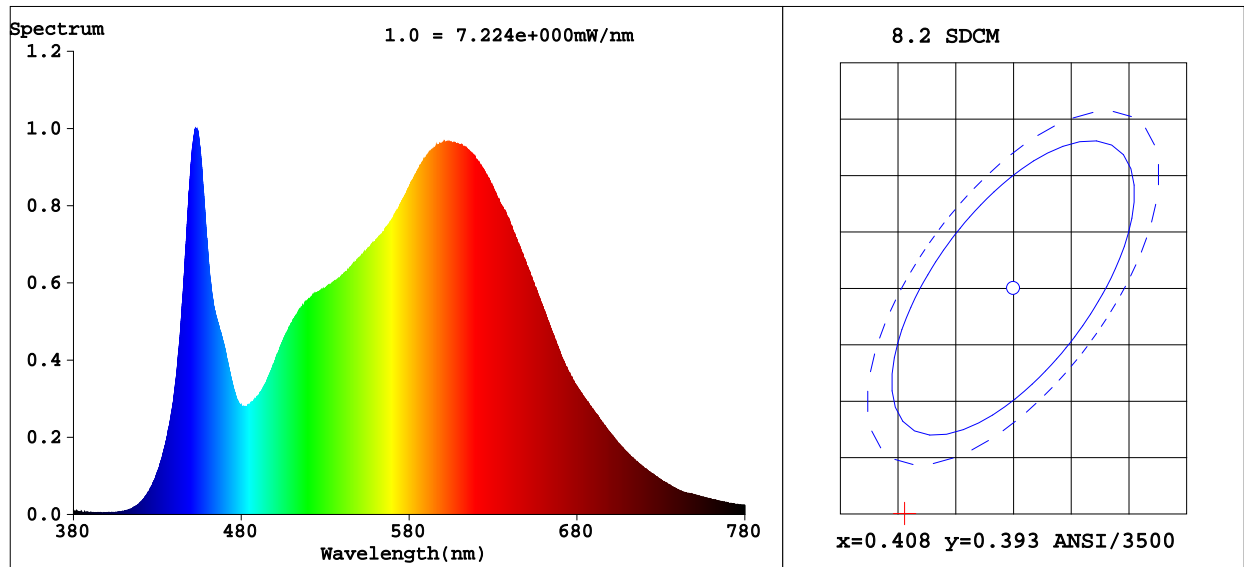


**Environmental Lights**  
**888-880-1880**



Hue Bin	Hue Angle	Rf	Graphic shift(%)	
			Chroma	Hue
1	0.0° - 22.5°	77	-11	0
2	22.5° - 45.0°	80	-7	6
3	45.0° - 67.5°	74	-3	12
4	67.5° - 90.0°	84	0	8
5	90.0° - 112.5°	88	1	4
6	112.5° - 135.0°	94	2	0
7	135.0° - 157.5°	90	-2	-3
8	157.5° - 180.0°	87	-5	-1
9	180.0° - 202.5°	85	-6	4
10	202.5° - 225.0°	73	-5	13
11	225.0° - 247.5°	73	0	18
12	247.5° - 270.0°	81	6	8
13	270.0° - 292.5°	89	5	-1
14	292.5° - 315.0°	81	7	-10
15	315.0° - 337.5°	77	1	-14
16	337.5° - 360.0°	76	-6	-8

**Environmental Lights**  
888-880-1880



### Colorimetric Parameters

Chromaticity Coordinate:  $x=0.3984$   $y=0.3717/u'=0.2391$   $v'=0.5020$

CCT=3496K (Duv=-0.0070) Dominant WL:Ld =584.6nm Purity=31.1%

Peak WL:Lp=452.8nm FWHM=21.6nm

Render Index:Ra=89.7

R1 =91	R2 =97	R3 =96	R4 =89	R5 =91	R6 =93	R7 =87	
R8 =74	R9 =43	R10=91	R11=89	R12=76	R13=93	R14=99	R15=87

### Photometric & Radiometric Parameters

Flux=372.3 lm Eff.:33.65 lm/W Fe=1.232 W Scotopic:605.87 S/P:1.6275

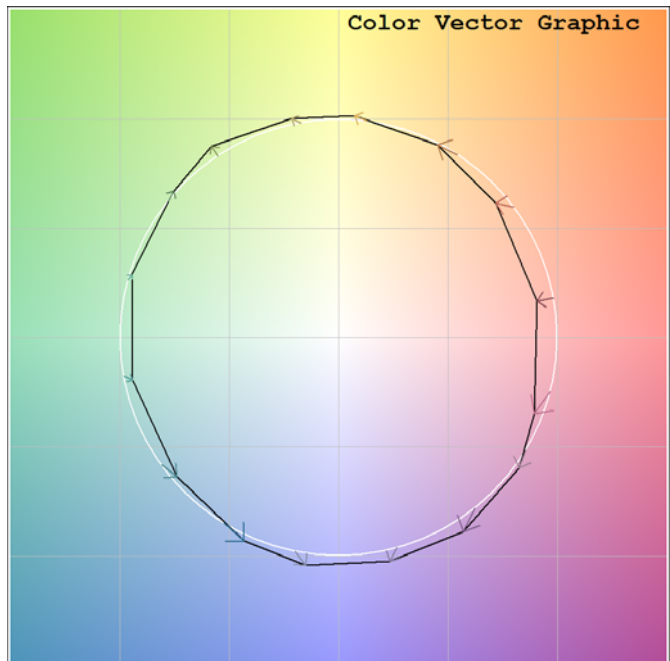
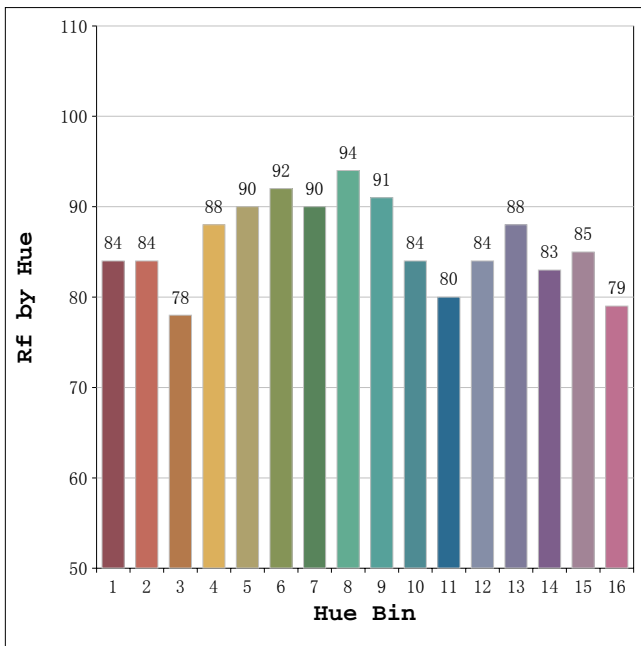
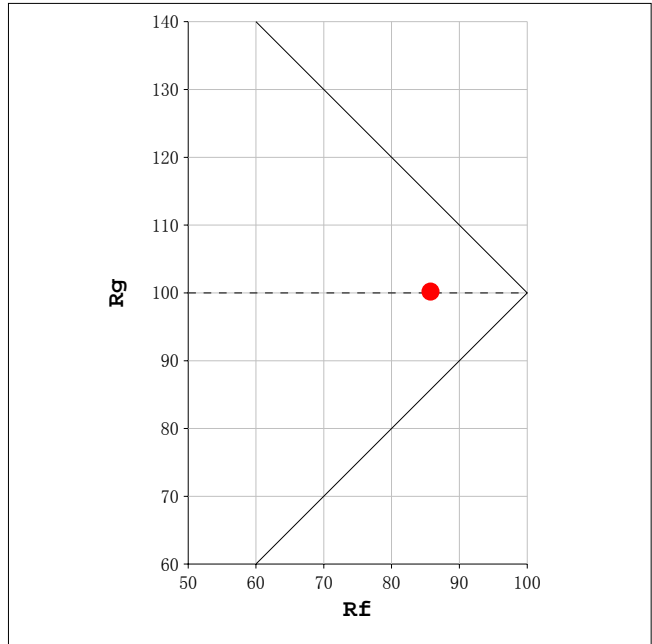
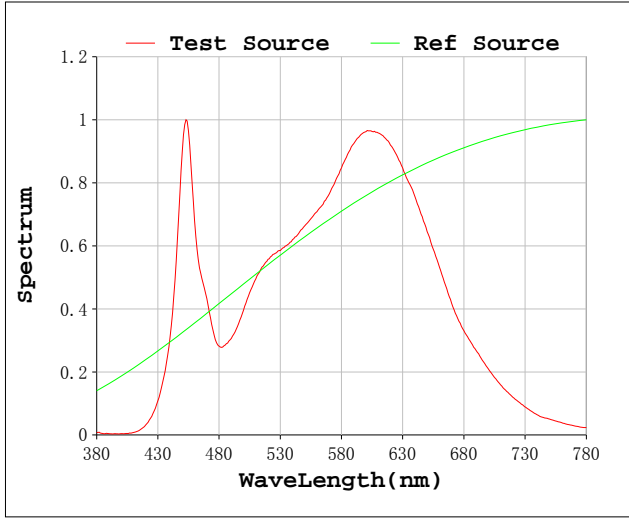
### Electrical parameters

V=24.00 V I=0.4610 A P=11.06 W PF=1.000 F=0.00 Hz

Status: Integral T = 480 ms Ip = 44996 (69%)

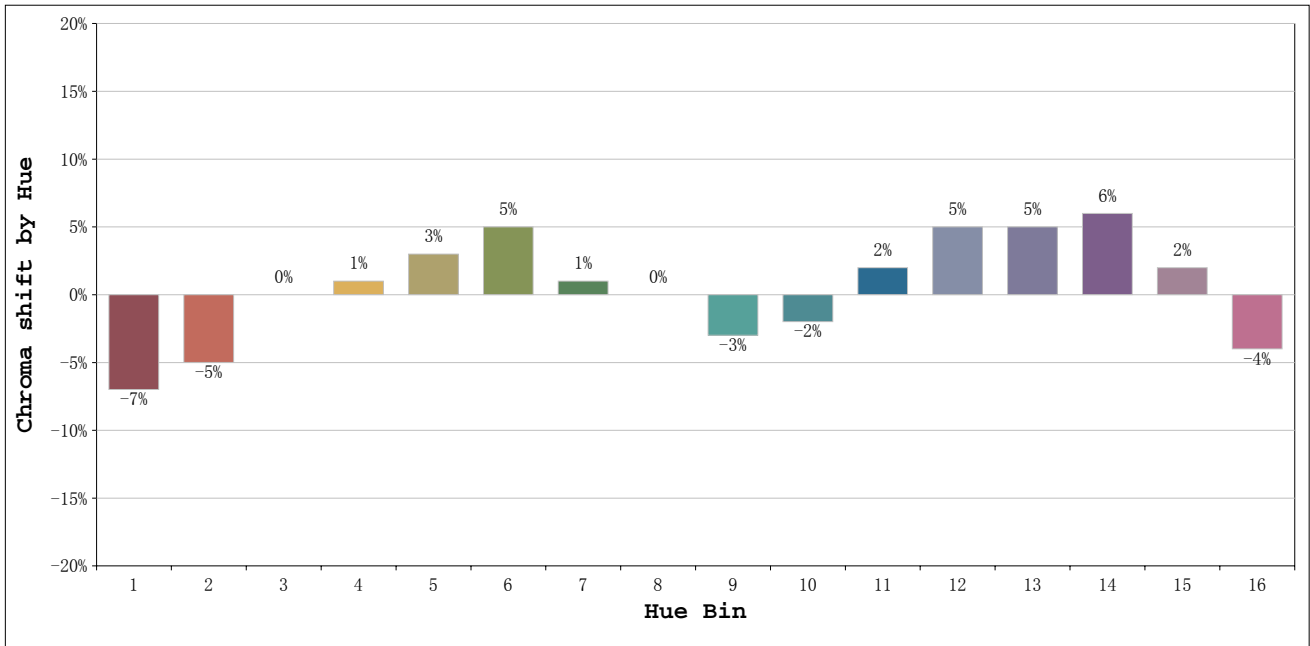
Test Mode: Fast Test; Sensitivity = High; Tecool: ON

Rf: 86      CCT: 3496 K      u': 0.2391  
 Rg: 100      Duv: -0.0070      v': 0.5020



**Environmental Lights**  
**888-880-1880**





Hue Bin	Hue Angle	Rf	Graphic shift(%)	
			Chroma	Hue
1	0.0° - 22.5°	84	-7	0
2	22.5° - 45.0°	84	-5	6
3	45.0° - 67.5°	78	0	10
4	67.5° - 90.0°	88	1	6
5	90.0° - 112.5°	90	3	4
6	112.5° - 135.0°	92	5	0
7	135.0° - 157.5°	90	1	-4
8	157.5° - 180.0°	94	0	-2
9	180.0° - 202.5°	91	-3	2
10	202.5° - 225.0°	84	-2	8
11	225.0° - 247.5°	80	2	12
12	247.5° - 270.0°	84	5	6
13	270.0° - 292.5°	88	5	-4
14	292.5° - 315.0°	83	6	-9
15	315.0° - 337.5°	85	2	-8
16	337.5° - 360.0°	79	-4	-10

**Environmental Lights**  
888-880-1880