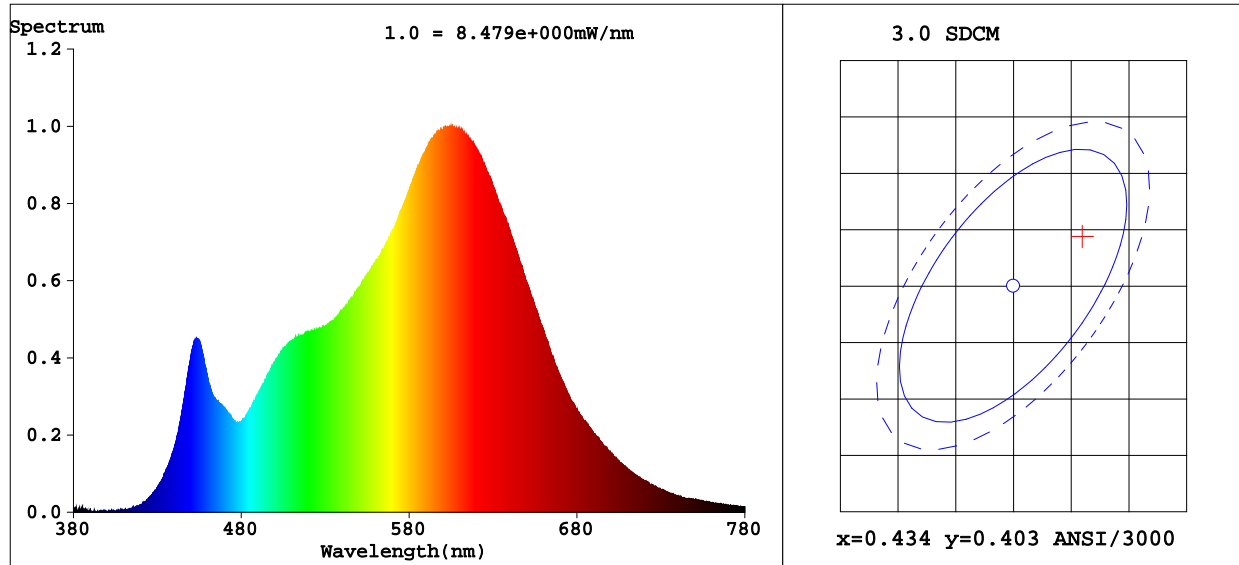


Integrating Sphere Test Report

Eluxtra™ ProFlex LED Neon - 3000K

LN-PF-3000K-10m



Colorimetric Parameters

Chromaticity Coordinate: x=0.4399 y=0.4077/u'=0.2509 v'=0.5232

CCT=2980K(Duv=0.0010) Dominant WL:Ld =582.5nm Purity=54.4%

Peak WL:Lp=605.6nm FWHM=122.1nm

Render Index: Ra=85.4

R1 =85	R2 =95	R3 =94	R4 =84	R5 =86	R6 =95	R7 =83	
R8 =62	R9 =15	R10=89	R11=86	R12=81	R13=88	R14=97	R15=76

Photometric & Radiometric Parameters

Flux=408.2 lm Eff.:36.51 lm/W Fe=1.253 W Scotopic:569.39 S/P:1.395

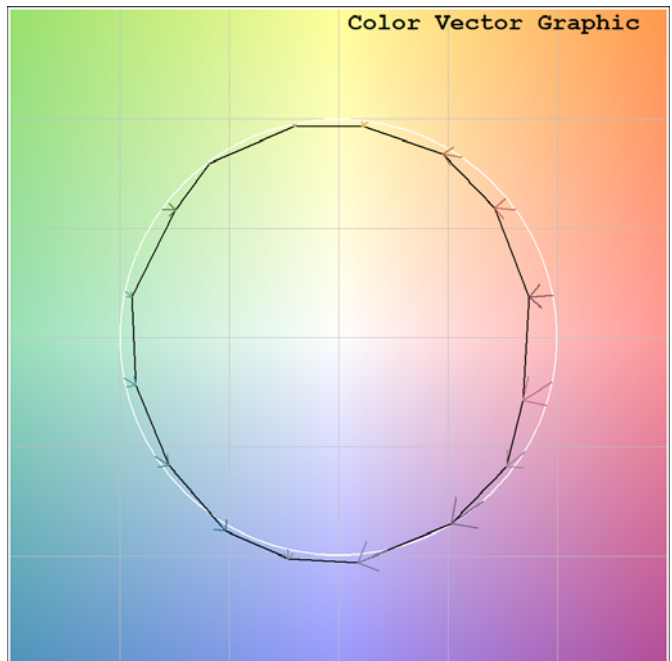
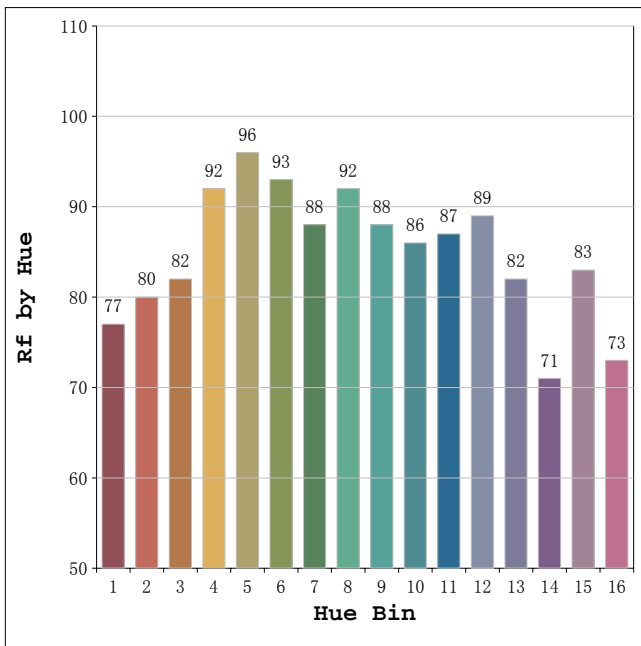
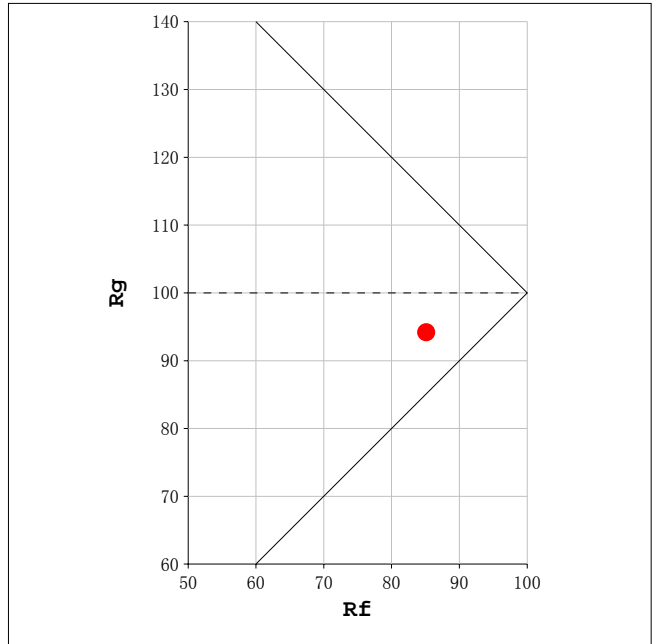
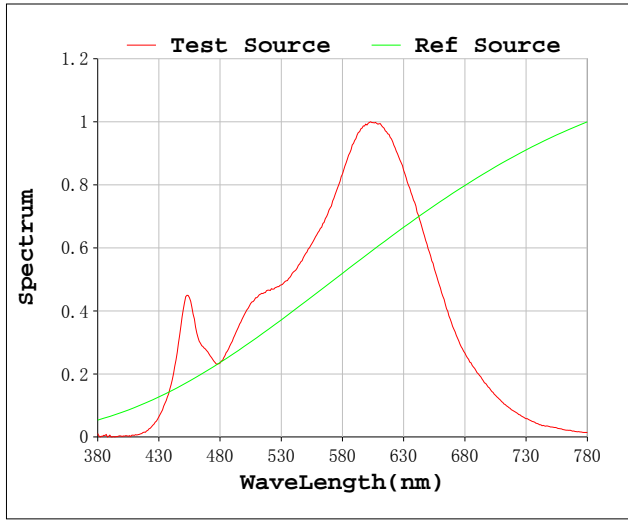
Electrical parameters

V=24.00 V I=0.4658 A P=11.18 W PF=1.000 F=0.00 Hz

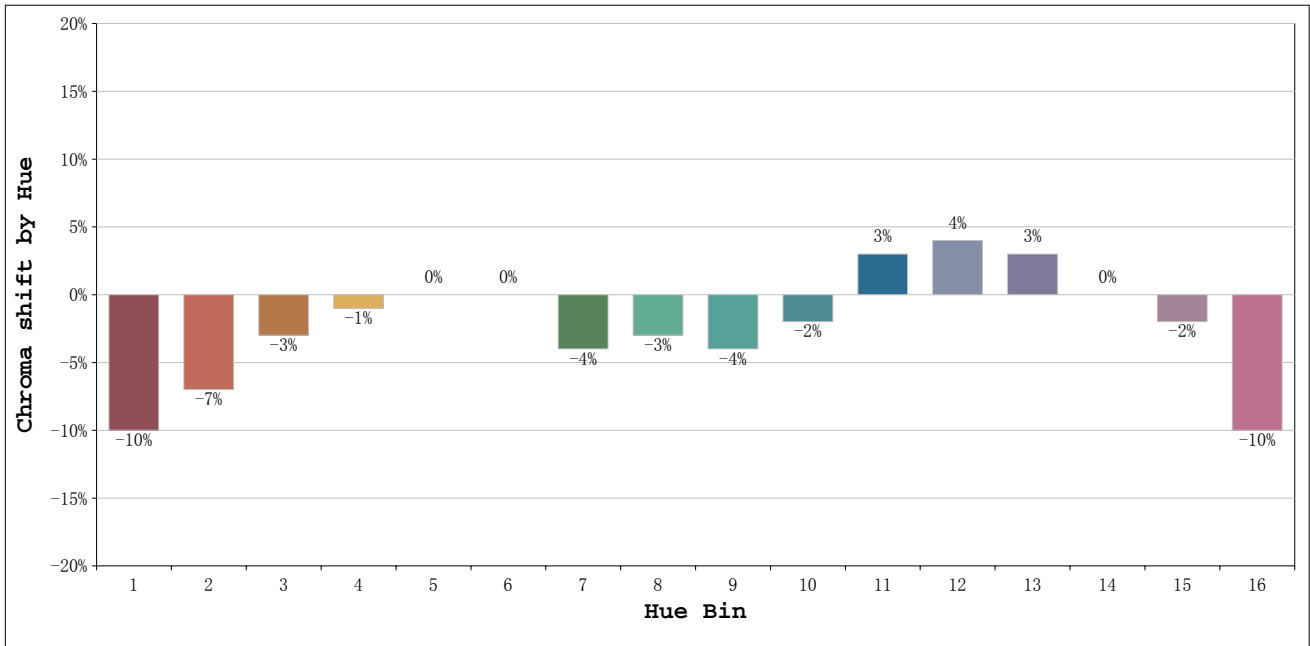
Status: Integral T = 100 ms Ip = 11407 (17%)

Test Mode: Fast Test; Sensitivity = High; Tecool: ON

Rf: 85 CCT: 2980 K u': 0.2509
 Rg: 94 Duv: 0.0010 v': 0.5232



Environmental Lights
888-880-1880



Hue Bin	Hue Angle	Rf	Graphic shift(%)	
			Chroma	Hue
1	0.0° - 22.5°	77	-10	1
2	22.5° - 45.0°	80	-7	6
3	45.0° - 67.5°	82	-3	8
4	67.5° - 90.0°	92	-1	2
5	90.0° - 112.5°	96	0	1
6	112.5° - 135.0°	93	0	0
7	135.0° - 157.5°	88	-4	-3
8	157.5° - 180.0°	92	-3	2
9	180.0° - 202.5°	88	-4	4
10	202.5° - 225.0°	86	-2	7
11	225.0° - 247.5°	87	3	7
12	247.5° - 270.0°	89	4	1
13	270.0° - 292.5°	82	3	-13
14	292.5° - 315.0°	71	0	-17
15	315.0° - 337.5°	83	-2	-10
16	337.5° - 360.0°	73	-10	-10

Environmental Lights
888-880-1880