

# Drywall LED Channel System

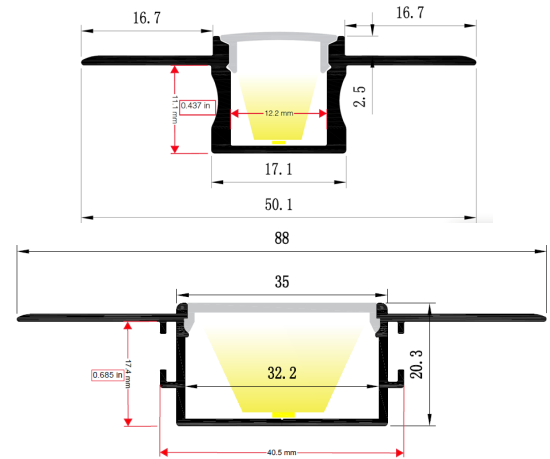
## INSTALLATION GUIDE

Environmental  
Lights™

Environmental Lights has a wide range of LED lighting solutions to bring your installations to life. Our CS181 and CS182 channel systems are designed for use within drywall. Each of these systems comes with a set of diffusers, one to be used during mud-in and the second to complete your installation plaster-free. See below for the best way to install your channel system.

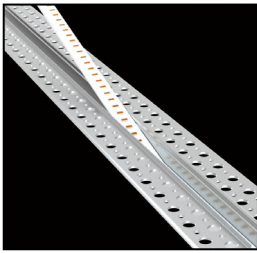
### PRODUCT SPECIFICATIONS

Product	CS181-2m	CS182-2m
Drywall Depth	0.44 in [11.1 mm]	0.68 in [17.4 mm]
Internal Width	0.48 in [12.2 mm]	1.26 in [32 mm]
Width w/ Wings	2.0 in [50.4 mm]	3.47 in [88 mm]
Channel Length	78.7 in [2 m]	78.7 in [2 m]
End Cap PN	EL-CAP-172	EL-CAP-173
End Cap w/ Hole PN	EL-CAP-172-H	EL-CAP-173-H

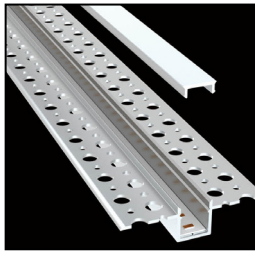


### STEP-BY-STEP INSTALLATION

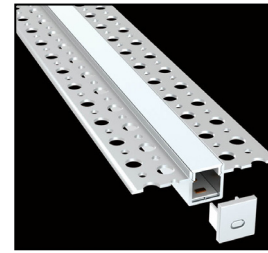
**A** Stick LEDs in the aluminum housing.



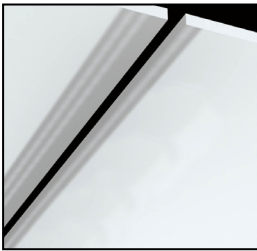
**B** Assemble the PC cover on the aluminum.



**C** Assemble the end cap to the profile.



**D** Cut into wall [0.43 in, 11.1 mm].



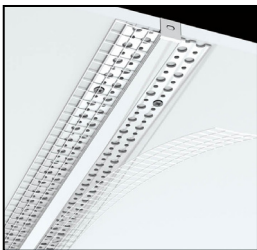
**E** Place the aluminum channel into the cut out space in the wall.



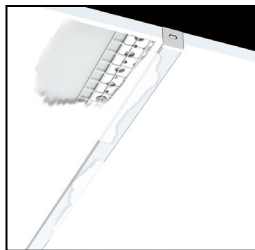
**F** Use screws to affix the aluminum securely.



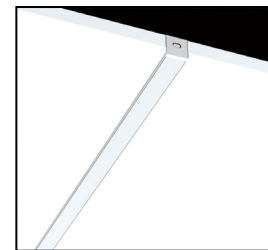
**G** Fix grid over the aluminum wings.



**H** Use plaster to cover the aluminum wings.



**I** Replace PC cover for a completed installation.



For More Information

888.880.1880

ContactUs@EnvironmentalLights.com

©2021 Environmental Lights. All rights reserved.



For More Information

888.880.1880

ContactUs@EnvironmentalLights.com

©2021 Environmental Lights. All rights reserved.