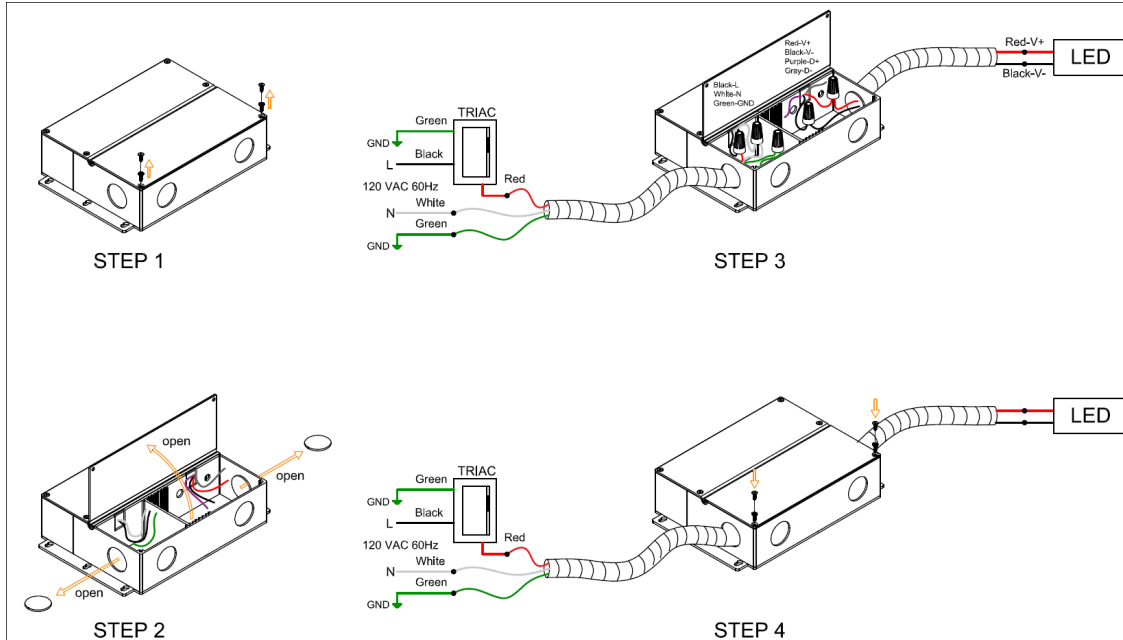


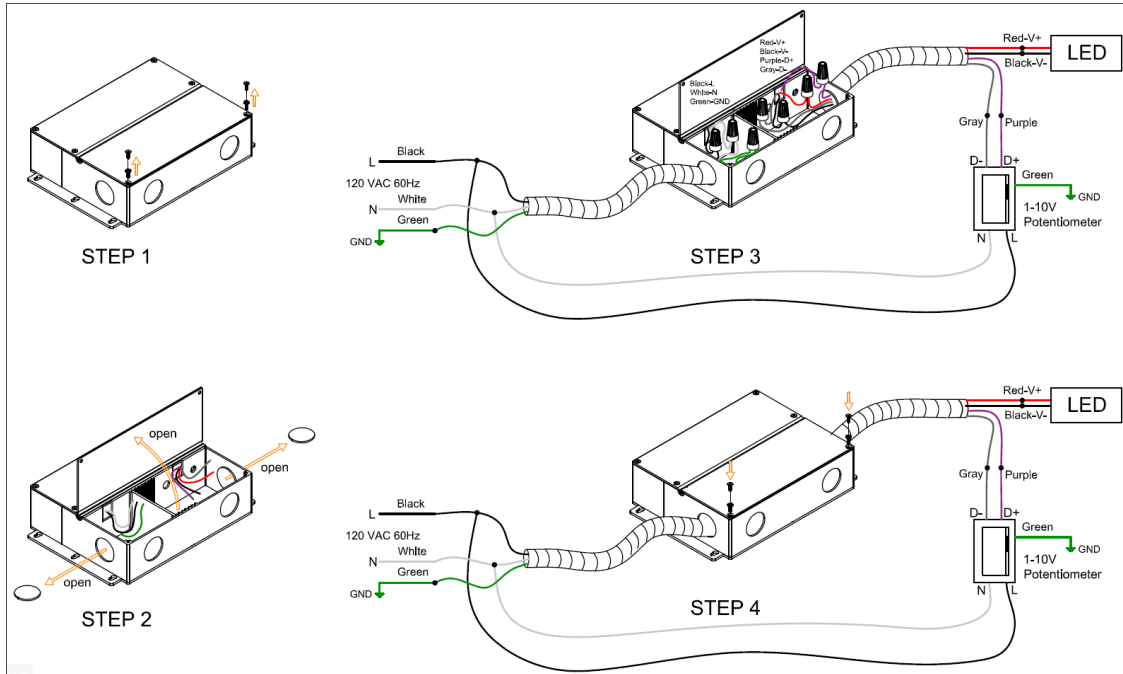
DMU Series LED Driver Instructions

IMPORTANT SAFETY INSTRUCTIONS – SAVE THESE INSTRUCTIONS.
 DANGER – TO REDUCE THE RISK OF FIRE OR ELECTRIC SHOCK CAREFULLY
 FOLLOW THESE INSTRUCTIONS.

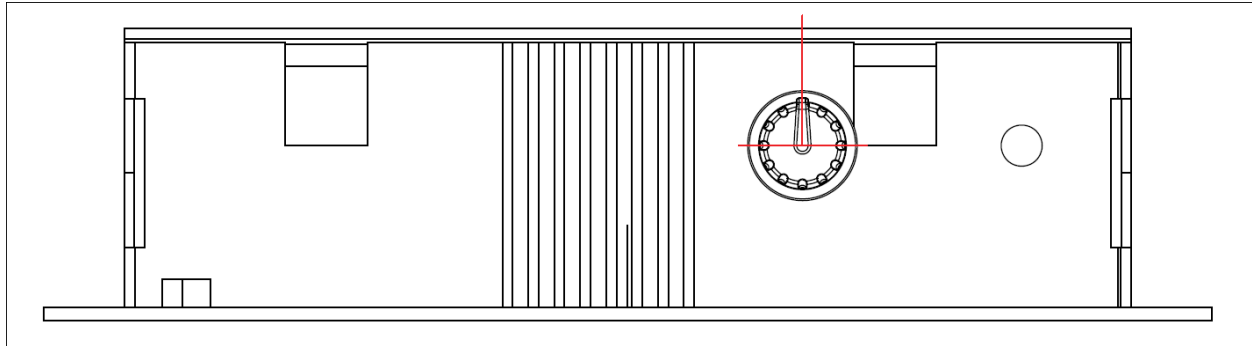
Phase Dimming Installation



0-10V Dimming Installation



Voltage Adjustment Neutral Position



Installation Instructions

- 1) Power-Off the branch circuit where the LED driver will be installed.
- 2) Remove the cover of the driver and any desired knockouts (if applicable) in the driver wiring compartment.
- 3) Physically secure the driver in the installation location using the mounting points on the driver chassis.
- 4) Connect the line voltage wiring (minimum 18 AWG) and earth ground wires from the branch circuit or dimmer to the matching wires on the LED driver. Wire connections are indicated on the driver label.
- 5) If using, connect the 0-10V dimming wires to an appropriate dimmer. Wire connections are indicated on the driver label.
- 6) Connect the low voltage wiring to the desired LED lighting (minimum 18AWG). The connected LED lighting must match the LED driver output voltage and have a total rated wattage less than the rated wattage of the LED driver output(s). Wire connections are indicated on the driver label.
- 7) Double check that all wiring connections are correct and secure.
- 8) Replace all wiring covers and reapply power to the branch circuit.

Warnings

- RISK OF ELECTRIC SHOCK – installation should only be done by qualified individuals.
- AC power should be disconnected during installation to minimize risk.
- All wiring must be rated for the appropriate voltage and at least 90°C.
- NO USER SERVICEABLE PARTS – do not open the sealed driver compartment