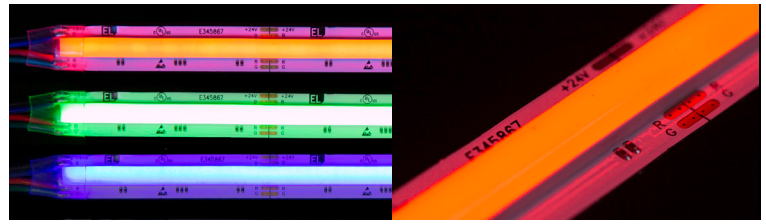


## Continuous LED Strip Light [RGB]

RGB-CL-12-5m, wp-RGB-CL-12-5m



### PRODUCT DESCRIPTION

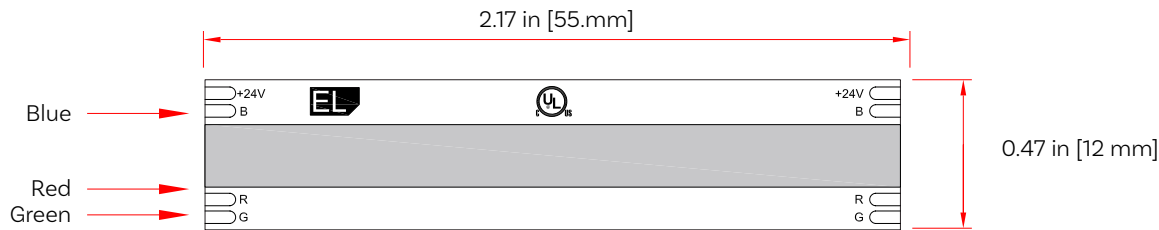
Continuous LED Strip Light is a new style of strip light that utilizes chip on board LEDs to create one diffused line of light and eliminating the dots seen with standard SMD LED strip light. With the LEDs integrated into the circuit board, Continuous LED Strip Light creates the appearance of an uninterrupted line of hotspot-free LEDs. It also enables designers to use diffused light in tight spaces where standard channel systems would not be ideal.

**Ideal Application:** Achieve dot-free lighting in under-cabinet or in-cabinet display lighting, cove lighting and other creative accent lighting.

### PRODUCT FEATURES

- Hotspot-free appearance
- Durable, flexible and low profile
- Fully dimmable
- UL Listed, CE, RoHS
- 1-meter lead lengths on each end
- Conductor Colors: White [24 V+], Red [Red], Green [Green], Blue [Blue]
- Waterproof option available
- 5-meter, 1-foot & sample kit options available
- Average Lifetime: 50,000 hours
- Warranty: 5 Year Limited

### MECHANICAL SPECIFICATIONS



### TECHNICAL SPECIFICATIONS

Product	RGB-CL-12-5m
Color Detail	Red, Green, Blue
Voltage	24 VDC
Power (watts/meter)	15 watts/m
Power (watts/ft)	5.5 watts/ft
Brightness (lumens/meter)	93.5/247/30 lm/m
Efficacy	71.7 lumens/watt
Color Rendering Index	90+
Beam Angle	120°
Width	0.47 in (12 mm)
Length	16.40 ft (5 m)
Min. Cutting Increment	2.17 in (55 mm)
LED Density	Continuous
IP Rating	IP20, IP65 (Waterproof)