

CASAMBI

BLUETOOTH MESH SOLUTIONS

Casambi is an advanced lighting control solution based on Bluetooth Low Energy (BLE). Bluetooth Low Energy is the only low power wireless technology in all modern smartphones, tablets and even smart watches, making it the only mainstream and future proof low power radio technology in the world.

Casambi technology provides a mesh network where all the intelligence of the system is replicated in every node (receivers & remotes) creating a system with no single point of failure.

A SYSTEM OVERVIEW

The Casambi ecosystem consists of 3 major components: Casambi App, Casambi Enabled Receivers and Optional Casambi Enabled Remotes

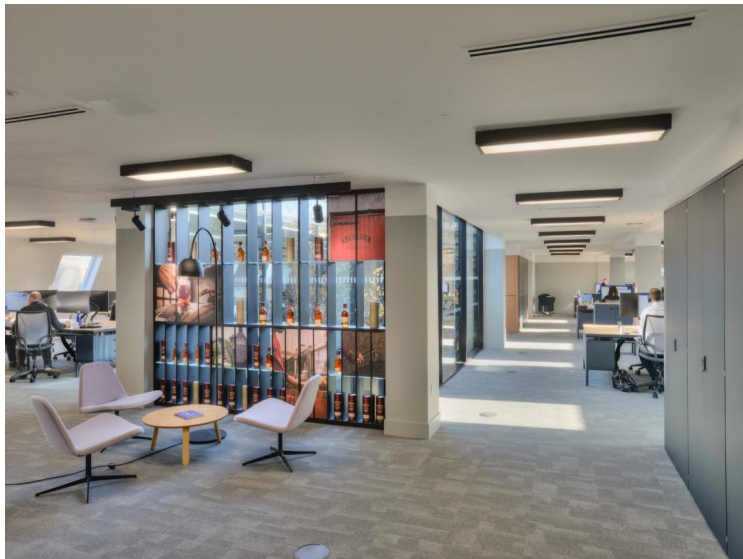


FIXTURE PERSONALITIES

- Monochrome
- Tunable White [with circadian rhythm programming]
- RGB
- 4-in-1
- Up to 8 independent channels using DMX [Monochrome, Tunable White, RGB and RGBW personalities – Additional channels are controlled independently with simple sliders.

OUTPUT OPTIONS

- PWM [Monochrome, Tunable White, RGB and RGBW personalities]
- 0-10V [Monochrome and Tunable White personalities]
- DMX [Monochrome, Tunable White, RGB and RGBW personalities]



B FEATURES & SPECIFICATIONS

CASAMBI APP

The Casambi app is the easiest and most natural way to control your lights. The first time use has been made easy and intuitive. With one tap you are ready to control your lights. The app can be downloaded from the Apple App Store and on Google Play.

CASAMBI ENABLED RECEIVERS

- CBU-PWM4-4 [4-Channel PWM] - Controls LED strip directly
- CBU-ASR [2-Channel 0-10V] - Controls 0-10v dimming power supplies
- casDMX [8-Channel DMX] - Controls DMX devices and decoders

NOTE: Up to 250 Casambi products can be integrated into a single system.

OPTIONAL CASAMBI ENABLED REMOTES

- **Casambi Xpress** - Configurable interface capable of controlling scenes, animations, brightness, speed zones, CCT and more. Includes 4 target buttons that can control a scene or an animation on the user's choice or simply one luminaire, one luminaire group or all lamps together, if desired.
- **Wall Mounted Dimmer Switch** - Replaces a standard wall-mount dimmer and is pre-configured as a manual dimmer. The dimmer connects to 120V line voltage for ease of installation, and functions via a bluetooth mesh network to control scenes, single colors and all lights in a specific zone.
- **Wall Mounted Dimmer Switch with PIR Occupancy Sensor** - Replaces a standard wall-mount dimmer and is pre-configured as a manual dimmer with a motion sensor. The dimmer connects to 120V line voltage for ease of installation, and functions via a bluetooth mesh network to control scenes, single colors and all lights in a specific zone.

c REGULATORY

- CBU-PWM4-4 Receiver - UL Listed, CE
- CBU-ASR Receiver - UL Listed, CE
- casDMX Receiver - ETL
- All Optional Remotes - UL Listed