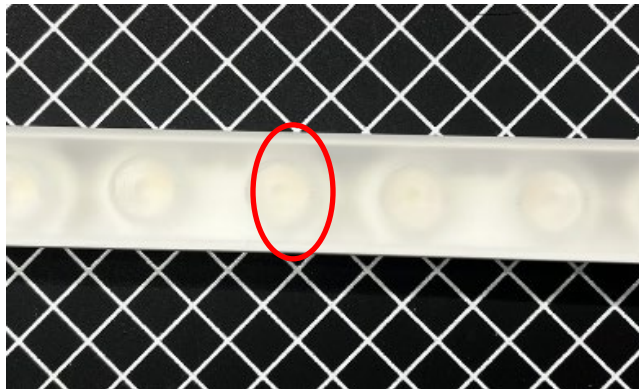


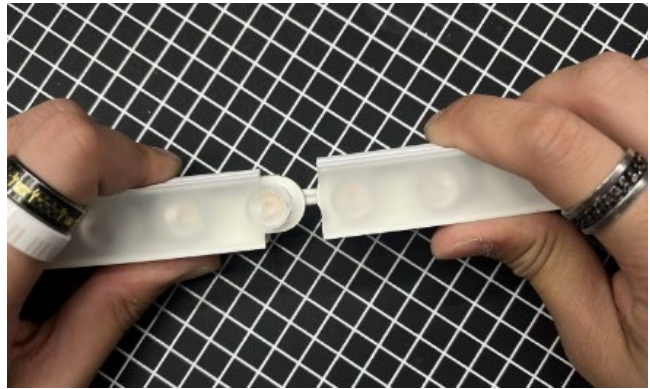
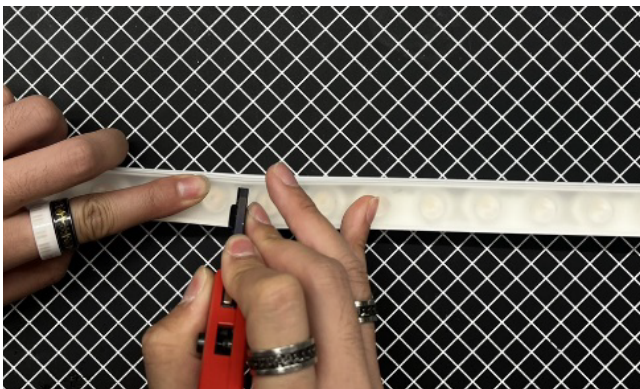
## Cut & Cap Instructions: Cove Wash Dual Bend

Please read all instructions before beginning.

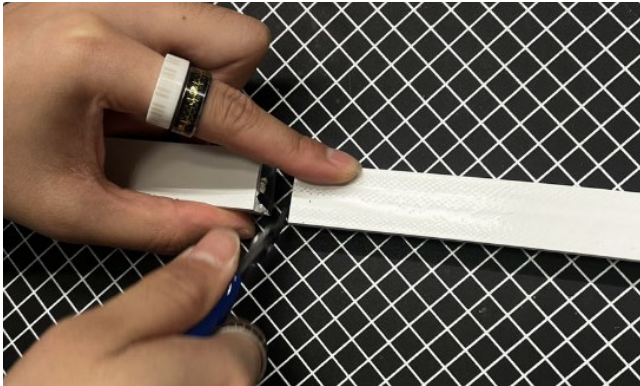
1. Ensure the product is dry and disconnected from power and/or controller.
2. Locate the nearest cut segment to your desired cut length. The cut segment is visible from the top; look for exposed wires between internal modules.



3. Using a sharp knife or shears, cut through only the outer sheath first and separate the sheath to expose the inner modules and wires between modules.



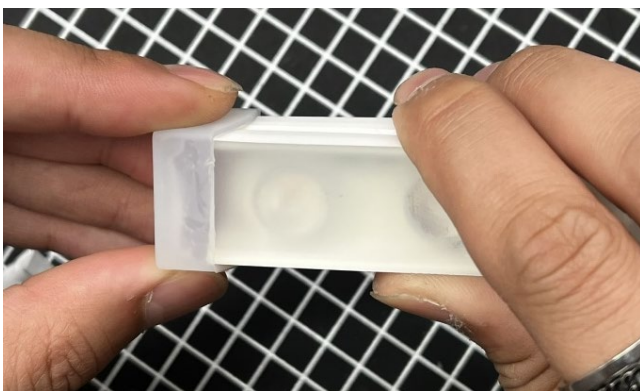
4. Cleanly cut wires between modules. Ensuring that there are no stray wire strands that could cause a short between two conductors.



5. Ensure the end cap is dry, apply ample glue to the inner surface of cap, and line up end cap with sheath. (We recommend our waterproof glue: sf-glue)



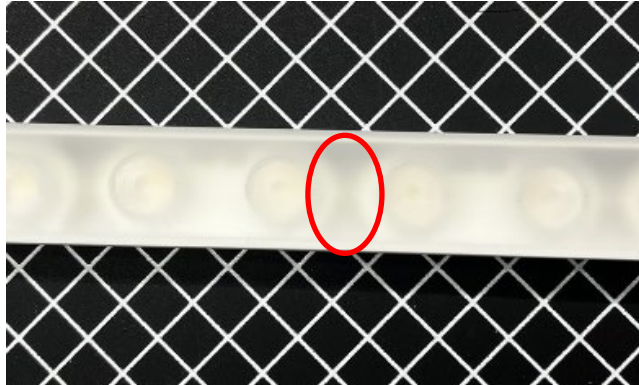
6. Press the end cap firmly onto the cut end of the product. Allow the glue to dry (at least 24 hours) before installing and powering strip.





### Cut & Cap with wire exit: Cove Wash Dual Bend

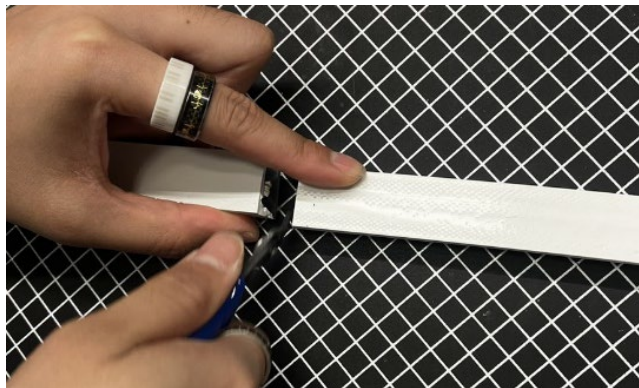
1. Ensure the product is dry and disconnected from power and/or controller.
2. Locate the nearest cut segment to your desired cut length. The cut segment is visible from the top; look for exposed wires between internal modules.



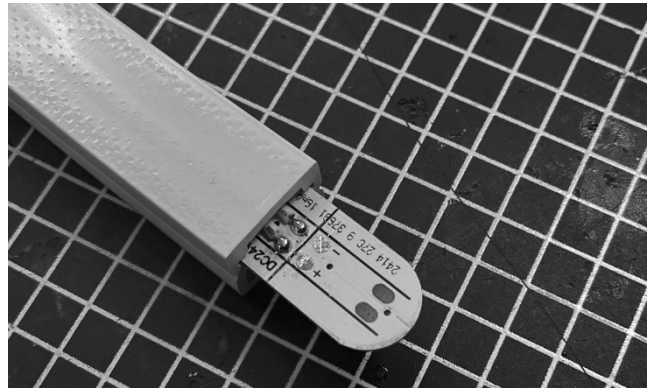
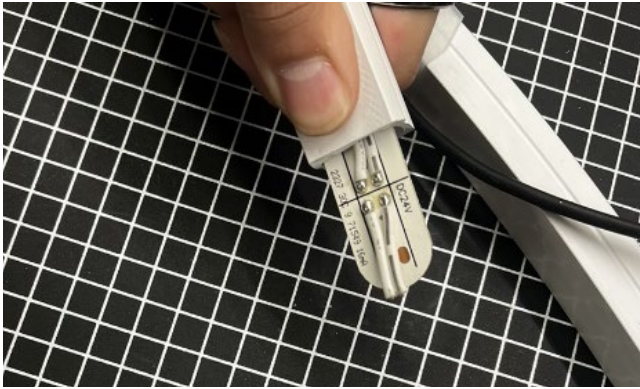
3. Cut through the outer sheath first and separate the sheath to expose the inner modules and wires between modules.



4. Cleanly Cut wires between modules.
  - a. Ensure that there are no stray wire strands that could cause a short between two conductors.



5. Using needle nose pliers or a similar implement, carefully pull the module out enough to access the wires. Hold the module in place while performing the next steps; otherwise, the module will recede back into the sheath.



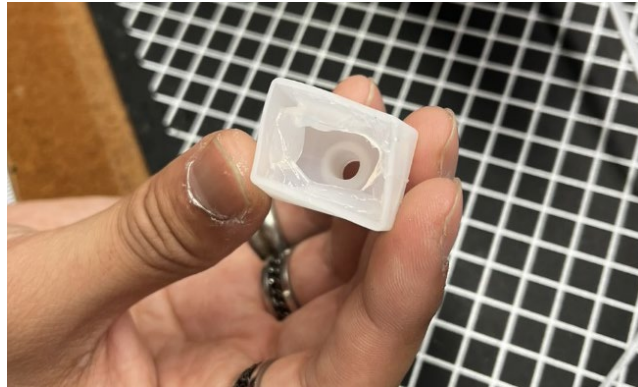
6. Attach new leads to the module:
  - a. Cut the remainder of the wire off the module.
  - b. Add fresh solder to the solder pads.
  - c. Solder the new leads directly to the modules.



**\*Note: If you are using a lead with a connector that won't fit through the end cap hole, please feed the end cap onto the wire before soldering\*\***



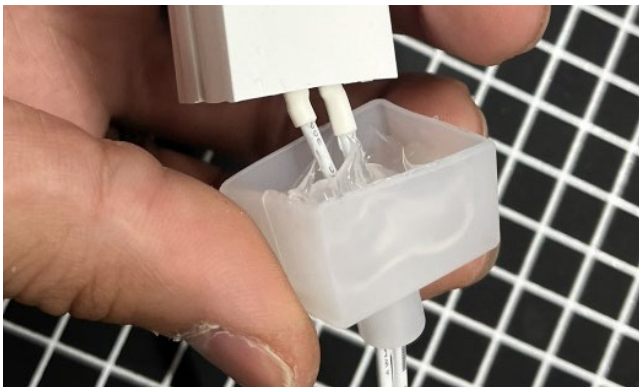
7. Apply ample glue to the inner surface of cap. (We recommend our waterproof glue: sf-glue)



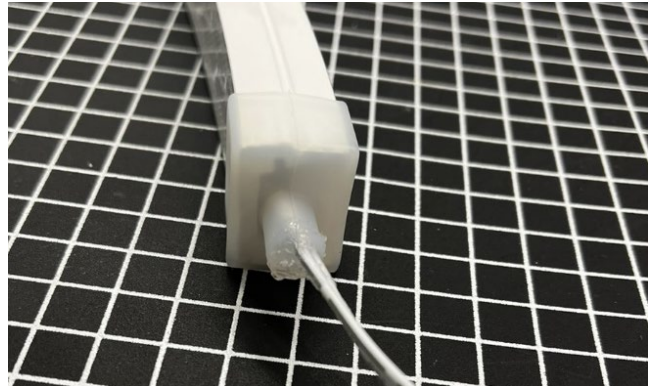
8. Feed the wire lead through the end cap.



9. Apply more glue to the inner part of the cap, ensuring the glue coats the wires and line up the end cap with the sheath.



10. Secure the end cap to the sheath and apply glue to the cap, filling the wire exit to ensure a waterproof seal.



11. Allow the glue to dry (at least 24 hours) before installing and powering the strip.