

## LED Puck Light, 24V

CCT-puck-24V-F, CCT-swivel-puck-24V-F



### PRODUCT DESCRIPTION

Puck Lights from Environmental Lights are an easy-to-use and reliable solution for accent downlighting. These lights come in many configurations including monochrome, tunable white, and 4-in-1 RGBW. Puck lights are available in multiple configurations including swivel and fixed in both white and black finishes.

Puck Lights have a high lumen output, a CRI of 90+, and are available in a variety of color temperatures including 2700K, 3000K, 4000K, 5000K, 6500K, Tunable White and RGBW. We offer compatible accessories such as, extended power input cables, y-splitters and extension cables to make wiring a breeze even in the most complex layouts.

### PRODUCT FEATURES

- High lumen output
- Recessed mounting
- Monochrome, Tunable White & 4-in-1 RGBW
- Multiple options: Black & White, Swivel & Fixed
- CRI 90+
- UL Listed

### SPECIFICATIONS & PARAMETERS

■ = Products highlighted in blue are in-stock.

All other SKUs are subject to a minimum order quantity. Please inquire within for more details.

#### Fixed Puck with White Finish

Product Number	2700K-puck-24V-W	3000K-puck-24V-W	4000K-puck-24V-W	5000K-puck-24V-W	6500K-puck-24V-W	TW2465-puck-24V-W
Color Temperature	2700 K	3000 K	4000 K	5000 K	6500 K	2400K - 6500K
Voltage (DC)	24 VDC	24 VDC	24 VDC	24 VDC	24 VDC	24 VDC
Wattage	2.75 W	2.75 W	2.75 W	2.75 W	2.75 W	2.75 W
Beam Angle	106°	106°	106°	106°	106°	106°
Color Rendering Index	90+	90+	90+	90+	90+	90+
Brightness	157 lm/puck	157 lm/puck	157 lm/puck	157 lm/puck	157 lm/puck	110/130 lm/puck
Height	0.41 in [10.5 mm]	0.41 in [10.5 mm]	0.41 in [10.5 mm]	0.41 in [10.5 mm]	0.41 in [10.5 mm]	0.41 in [10.5 mm]
Diameter	2.76 in [70 mm]	2.76 in [70 mm]	2.76 in [70 mm]	2.76 in [70 mm]	2.76 in [70 mm]	2.76 in [70 mm]
IP Rating	IP20	IP20	IP20	IP20	IP20	IP20
Average Lifetime	30,000 hours	30,000 hours	30,000 hours	30,000 hours	30,000 hours	30,000 hours
Ambient Working Temp	-10°C to -35°C	-10°C to -35°C	-10°C to -35°C	-10°C to -35°C	-10°C to -35°C	-10°C to -35°C
Exterior Finish	White	White	White	White	White	White

#### Fixed Puck with Black Finish

Product Number	2700K-puck-24V-B	3000K-puck-24V-B	4000K-puck-24V-B	5000K-puck-24V-B	6500K-puck-24V-B	TW2465-puck-24V-B
Color Temperature	2700 K	3000 K	4000 K	5000 K	6500 K	2400K - 6500K
Voltage (DC)	24 VDC	24 VDC	24 VDC	24 VDC	24 VDC	24 VDC
Wattage	2.75 W	2.75 W	2.75 W	2.75 W	2.75 W	2.75 W
Beam Angle	106°	106°	106°	106°	106°	106°
Color Rendering Index	90+	90+	90+	90+	90+	90+
Brightness	157 lm/puck	157 lm/puck	157 lm/puck	157 lm/puck	157 lm/puck	100/120 lm/puck
Height	0.41 in [10.5 mm]	0.41 in [10.5 mm]	0.41 in [10.5 mm]	0.41 in [10.5 mm]	0.41 in [10.5 mm]	0.41 in [10.5 mm]
Diameter	2.76 in [70 mm]	2.76 in [70 mm]	2.76 in [70 mm]	2.76 in [70 mm]	2.76 in [70 mm]	2.76 in [70 mm]
IP Rating	IP20	IP20	IP20	IP20	IP20	IP20
Average Lifetime	30,000 hours	30,000 hours	30,000 hours	30,000 hours	30,000 hours	30,000 hours
Ambient Working Temp	-10°C to -35°C	-10°C to -35°C	-10°C to -35°C	-10°C to -35°C	-10°C to -35°C	-10°C to -35°C
Exterior Finish	Black	Black	Black	Black	Black	Black

SPECIFICATIONS & PARAMETERS

■ = Products highlighted in blue are in-stock.  
All other SKUs are subject to a minimum order quantity. Please inquire within for more details.

Swivel Puck with White Finish

Product Number	2700K-swivel-puck-24V-W	3000K-swivel-puck-24V-W	4000K-swivel-puck-24V-W
Color Temperature	2700 K	3000 K	4000 K
Voltage (DC)	24 VDC	24 VDC	24 VDC
Wattage	2.75 W	2.75 W	2.75 W
Beam Angle	101°	101°	101°
Color Rendering Index	90+	90+	90+
Brightness	165 lm/puck	165 lm/puck	165 lm/puck
Height	1.14 in [29 mm]	1.14 in [29 mm]	1.14 in [29 mm]
Diameter	3.27 in [83 mm]	3.27 in [83 mm]	3.27 in [83 mm]
IP Rating	IP20	IP20	IP20
Average Lifetime	30,000 hours	30,000 hours	30,000 hours
Ambient Working Temp	-10°C to -35°C	-10°C to -35°C	-10°C to -35°C
Exterior Finish	White	White	White

Product Number	5000K-swivel-puck-24V-W	6500K-swivel-puck-24V-W	TW2465-swivel-puck-24V-W
Color Temperature	5000 K	6500 K	2400K - 6500K
Voltage (DC)	24 VDC	24 VDC	24 VDC
Wattage	2.75 W	2.75 W	2.75 W
Beam Angle	101°	101°	101°
Color Rendering Index	90+	90+	90+
Brightness	165 lm/puck	165 lm/puck	165 lm/puck
Height	1.14 in [29 mm]	1.14 in [29 mm]	1.14 in [29 mm]
Diameter	3.27 in [83 mm]	3.27 in [83 mm]	3.27 in [83 mm]
IP Rating	IP20	IP20	IP20
Average Lifetime	30,000 hours	30,000 hours	30,000 hours
Ambient Working Temp	-10°C to -35°C	-10°C to -35°C	-10°C to -35°C
Exterior Finish	White	White	White

Product Number	RGB3000K-swivel-puck-24V-W	RGB6500K-swivel-puck-24V-W
Color Temperature	Red, Green, Blue + 3000K	Red, Green, Blue + 6500K
Voltage (DC)	24 VDC	24 VDC
Wattage	2.75 W	2.75 W
Beam Angle	101°	101°
Color Rendering Index	80+	80+
Brightness	5/26/4/55 lm/puck	5/26/4/60 lm/puck
Height	1.14 in [29 mm]	1.14 in [29 mm]
Diameter	3.27 in [83 mm]	3.27 in [83 mm]
IP Rating	IP20	IP20
Average Lifetime	30,000 hours	30,000 hours
Ambient Working Temp	-10°C to -35°C	-10°C to -35°C
Exterior Finish	White	White

**SPECIFICATIONS & PARAMETERS**

**■** = Products highlighted in blue are in-stock.  
All other SKUs are subject to a minimum order quantity. Please inquire within for more details.

**Swivel Puck with Black Finish**

Product Number	2700K-swivel-puck-24V-B	3000K-swivel -puck-24V-B	4000K-swivel-puck-24V-B
Color Temperature	2700 K	3000 K	4000 K
Voltage (DC)	24 VDC	24 VDC	24 VDC
Wattage	2.75 W	2.75 W	2.75 W
Beam Angle	106°	106°	106°
Color Rendering Index	90+	90+	90+
Brightness	157 lm/puck	157 lm/puck	157 lm/puck
Height	1.14 in [29 mm]	1.14 in [29 mm]	1.14 in [29 mm]
Diameter	3.27 in [83 mm]	2.76 in [70 mm]	2.76 in [70 mm]
IP Rating	IP20	IP20	IP20
Average Lifetime	30,000 hours	30,000 hours	30,000 hours
Ambient Working Temp	-10°C to -35°C	-10°C to -35°C	-10°C to -35°C
External Finish	Black	Black	Black

Product Number	5000K-swivel-puck-24V-B	6500K-swivel -puck-24V-B	TW2465-swivel-puck-24V-B
Color Temperature	5000 K	6500 K	2400K - 6500K
Voltage (DC)	24 VDC	24 VDC	24 VDC
Wattage	2.75 W	2.75 W	2.75 W
Beam Angle	106°	106°	106°
Color Rendering Index	90+	90+	90+
Brightness	157 lm/puck	157 lm/puck	100/120 lm/puck
Height	1.14 in [29 mm]	1.14 in [29 mm]	1.14 in [29 mm]
Diameter	3.27 in [83 mm]	3.27 in [83 mm]	3.27 in [83 mm]
IP Rating	IP20	IP20	IP20
Average Lifetime	30,000 hours	30,000 hours	30,000 hours
Ambient Working Temp	-10°C to -35°C	-10°C to -35°C	-10°C to -35°C
External Finish	Black	Black	Black

Product Number	RGB3000K-swivel-puck-24V-B	RGB6500K-swivel-puck-24V-B
Color Temperature	Red, Green, Blue + 3000K	Red, Green, Blue + 6500K
Voltage (DC)	24 VDC	24 VDC
Wattage	2.75 W	2.75 W
Beam Angle	106°	106°
Color Rendering Index	80+	80+
Brightness	5/26/4/55 lm/puck	5/26/4/60 lm/puck
Height	1.14 in [29 mm]	1.14 in [29 mm]
Diameter	3.27 in [83 mm]	3.27 in [83 mm]
IP Rating	IP20	IP20
Average Lifetime	30,000 hours	30,000 hours
Ambient Working Temp	-10°C to -35°C	-10°C to -35°C
External Finish	Black	Black

**For More Information**

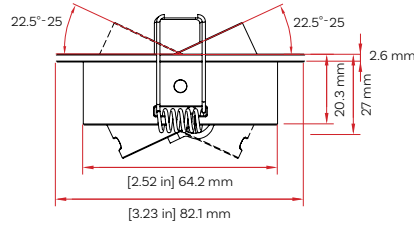
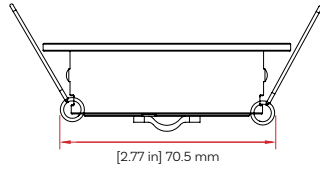
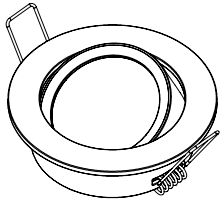
888.880.1880

ContactUs@EnvironmentalLights.com

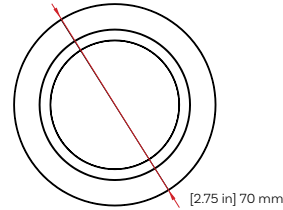
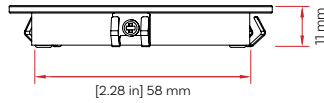
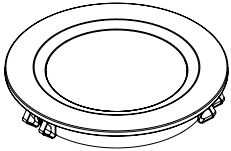
©2022 Environmental Lights. All rights reserved.

### MECHANICAL SPECIFICATIONS

#### SWIVEL PUCK LIGHT



#### FIXED PUCK LIGHT



### PRODUCT ACCESSORIES

Product Number		Length	Width	Height	Details
Y-Splitter - MiniClick White Plug to MiniClick Socket White mclick-w-p-split-s		7.87 in (200 mm)	-	-	This Y-splitter uses a MiniClick White Plug to two MiniClick Sockets.
Y-Splitter - Female SM3 to Male SM3 Y Splitter-FSM3-MSM3		6.00 in (152.4 mm)	0.64 in (16.3 mm)	0.3 in (7.5 mm)	This Y-splitter uses a Female SM3 plug to a Male SM3 plug.
Y-Splitter - Female SM5 to Male SM5 Y Splitter-FSM5-MSM5		6.00 in (152.4 mm)	0.73 in (18.45 mm)	0.37 in (9.45 mm)	This Y-splitter uses a Female SM5 plug to a Male SM5 plug.
SM5 Male to bare wire - 7 meters SM5-7m-M-BW		275.59 in (7000 mm)	0.73 in (18.45 mm)	0.37 in (9.45 mm)	This is a SM5 Male plug to bare wire and is 7m long.
Extension Cable - 5-Pin Male SM connector to 5-Pin Female SM connector - 1 meter SM5-ext1m-F-M		39.37 in (1000 mm)	0.73 in (18.45 mm)	0.37 in (9.45 mm)	This extension cable has a 5-Pin Male SM connector on one end and a 5-Pin Female SM connector on the other with 1m of wire.