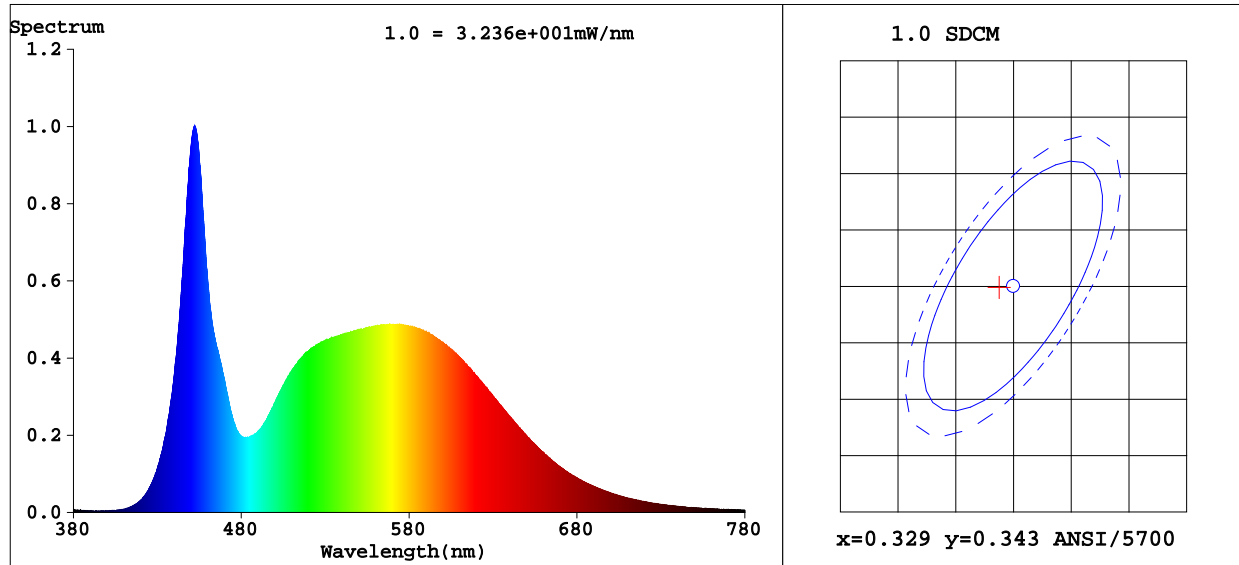


Integrating Sphere Test Report

Eluxtra™ ProFlex 2835 LED Strip Light - 5700K - 72/m

5700K-2835PF-72-15.5-10m



Colorimetric Parameters

Chromaticity Coordinate: x=0.3275 y=0.3424/u'=0.2030 v'=0.4775

CCT=5720K (Duv=0.0029) Dominant WL:Ld =513.8nm Purity=1.9%

Peak WL:Lp=452.4nm FWHM=19.3nm

Render Index: Ra=81.4

R1 =79	R2 =86	R3 =90	R4 =81	R5 =80	R6 =80	R7 =87	
R8 =67	R9 =2	R10=67	R11=79	R12=55	R13=81	R14=95	R15=75

Photometric & Radiometric Parameters

Flux=1003 lm Eff.:90.33 lm/W Fe=3.144 W Scotopic:2081.8 S/P:2.0762

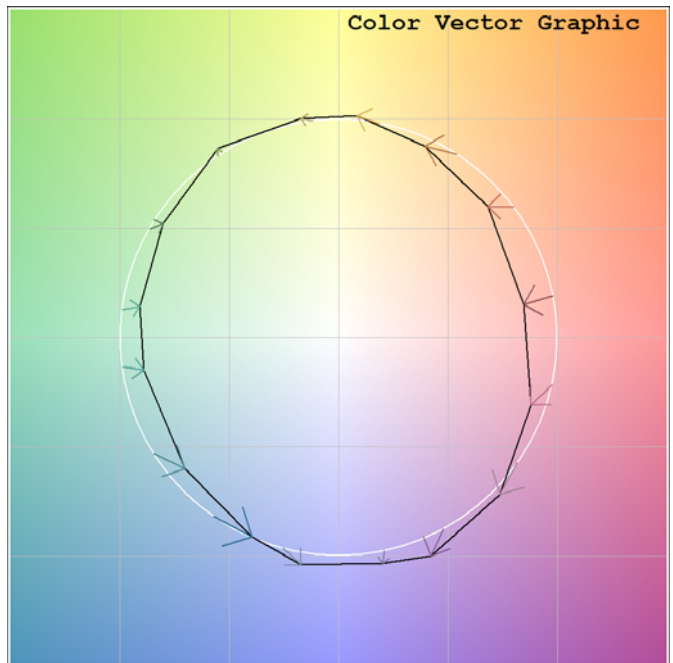
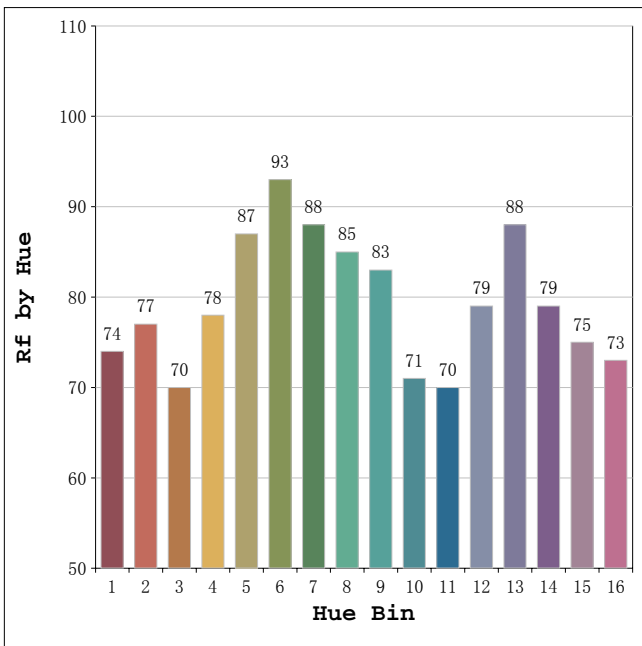
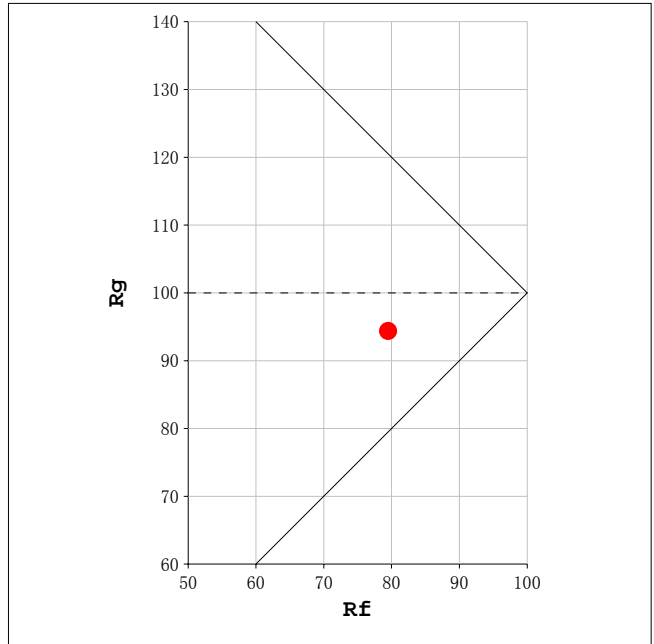
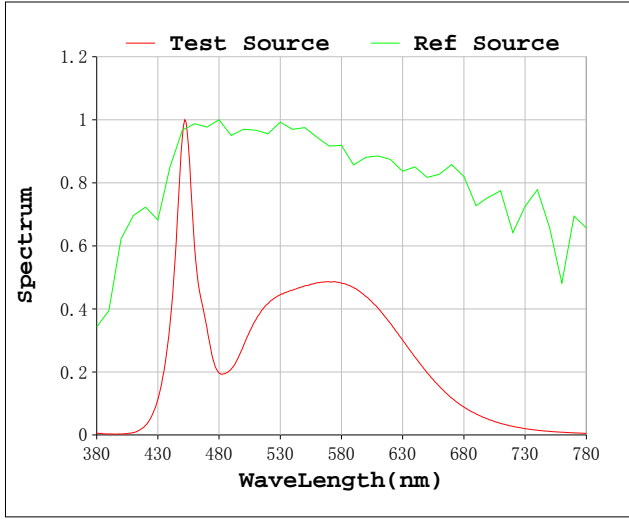
Electrical parameters

V=24.00 V I=0.4626 A P=11.10 W PF=1.000 F=0.00 Hz

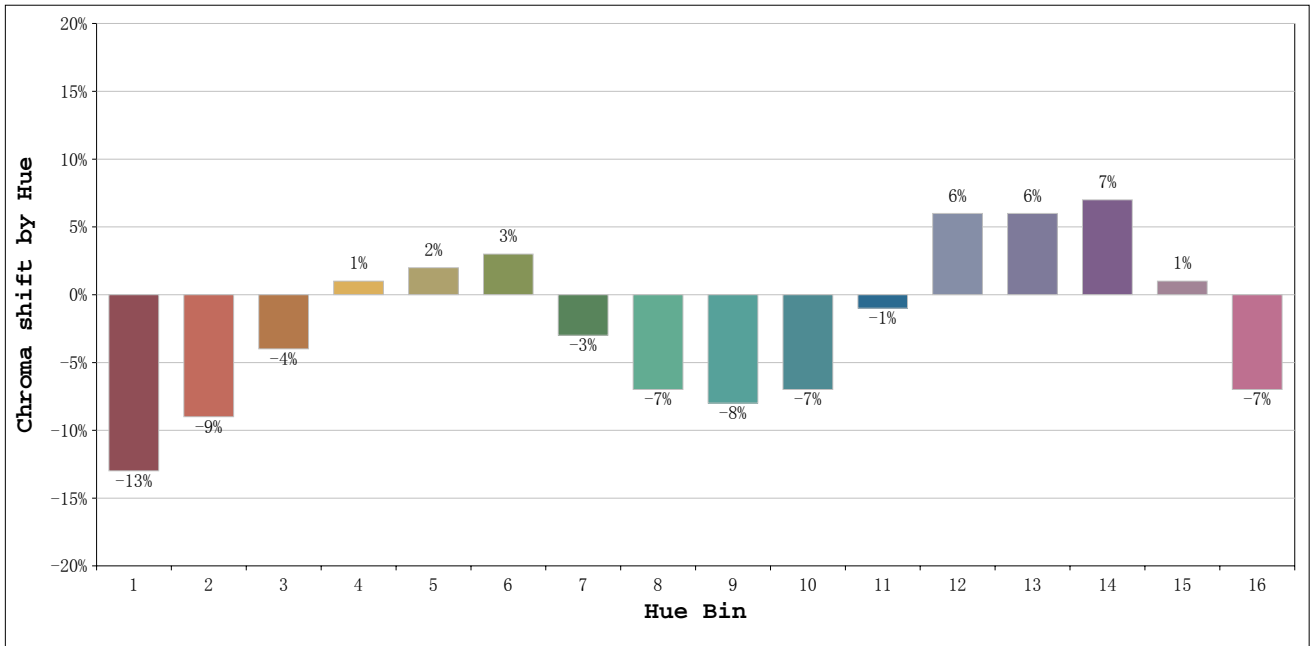
Status: Integral T = 214 ms Ip = 52606 (80%)

Test Mode: Fast Test; Sensitivity = High; Tecool: ON

Rf: 80 CCT: 5720 K u': 0.2030
 Rg: 94 Duv: 0.0029 v': 0.4775



Environmental Lights
888-880-1880



Hue Bin	Hue Angle	Rf	Graphic shift(%)	
			Chroma	Hue
1	0.0° - 22.5°	74	-13	0
2	22.5° - 45.0°	77	-9	7
3	45.0° - 67.5°	70	-4	14
4	67.5° - 90.0°	78	1	11
5	90.0° - 112.5°	87	2	5
6	112.5° - 135.0°	93	3	-1
7	135.0° - 157.5°	88	-3	-4
8	157.5° - 180.0°	85	-7	-2
9	180.0° - 202.5°	83	-8	3
10	202.5° - 225.0°	71	-7	14
11	225.0° - 247.5°	70	-1	20
12	247.5° - 270.0°	79	6	10
13	270.0° - 292.5°	88	6	-1
14	292.5° - 315.0°	79	7	-11
15	315.0° - 337.5°	75	1	-15
16	337.5° - 360.0°	73	-7	-10

Environmental Lights
888-880-1880