



## DATA SHEET

45-ALU LED extrusion – article number B4023 / B4023ANODA

### Product characteristics

The angular extrusion is made from high quality aluminum (also available in black double-anodized) and is designed for flexible or rigid LED strips that are 8 - 10mm wide. One of the accessories offered for the extrusion are covers that shade and protect LEDs inside the profile. There are a few types of covers: cover K, KA-BIS, HS (frosted or clear), LIGER (frosted matte) or clear focusing cover- S, thanks to which we can obtain a 10 degree light beam angle. Covers are made of polycarbonate and additionally, HS covers are certified for excellent resistance to all weather conditions and UV radiation, as well as being flame retardant. Standard polypropylene end caps and mounting brackets (made of steel with zinc or chrome finish) are used for the extrusion as supplementary accessories. End caps protect the extrusion from dust and other undesirable elements, which can make LED strips dirty and consequently deteriorate the lighting parameters. The extrusion can be mounted to surfaces with the use of double-sided adhesive tape or mounting brackets. The mounting bracket guarantees easy and secure mounting of the extrusion to a desired surface. It can also work as a connector between two extrusions. An integrated, straight line of light can be achieved by assembling the extrusion, densely spaced LEDs (minimum 140 LED per meter) and frosted HS cover or frosted matte LIGER cover (minimum 120 LED per meter) . The LED fixture can also be assembled to be waterproof with a level of IP 67. For mounting and power supply of extrusions, the elements from the mounting system presented on [www.KlusDesign.com](http://www.KlusDesign.com) can be used.

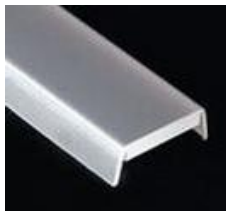
### Applications

The extrusion with the LED light source is mostly used in interior lighting, especially to light cabinets, stairs, glass-cases, or as a decoration light for a niche in drywall ceilings. IP 67 versions can also be used as outdoor lighting for elevations or architectural elements of gardens, drives, walkways and patios.

### Products related to the Extrusion



cover type K / KA-BIS  
frosted (1547/17071)  
clear (1548/17072)  
cover type LIGER  
frosted matte (1547/17071)



cover type HS  
frosted (1369)  
clear (1370)



cover type S  
clear (00220)



end cap  
without hole (1383)  
with hole (1440)



mounting bracket  
zinc (1399)  
chrome matt (1455)

### Technical specification

Ingress Protection Rating

IP 20 (standard), IP 67 (optional)

Available lengths

1 m / 2 m (can be cut to any size)

Material

body – aluminum, cover – polycarbonate (PC), end cap – polypropylene (PP), mounting bracket – steel



\*\*sample item from the mounting system of profiles

